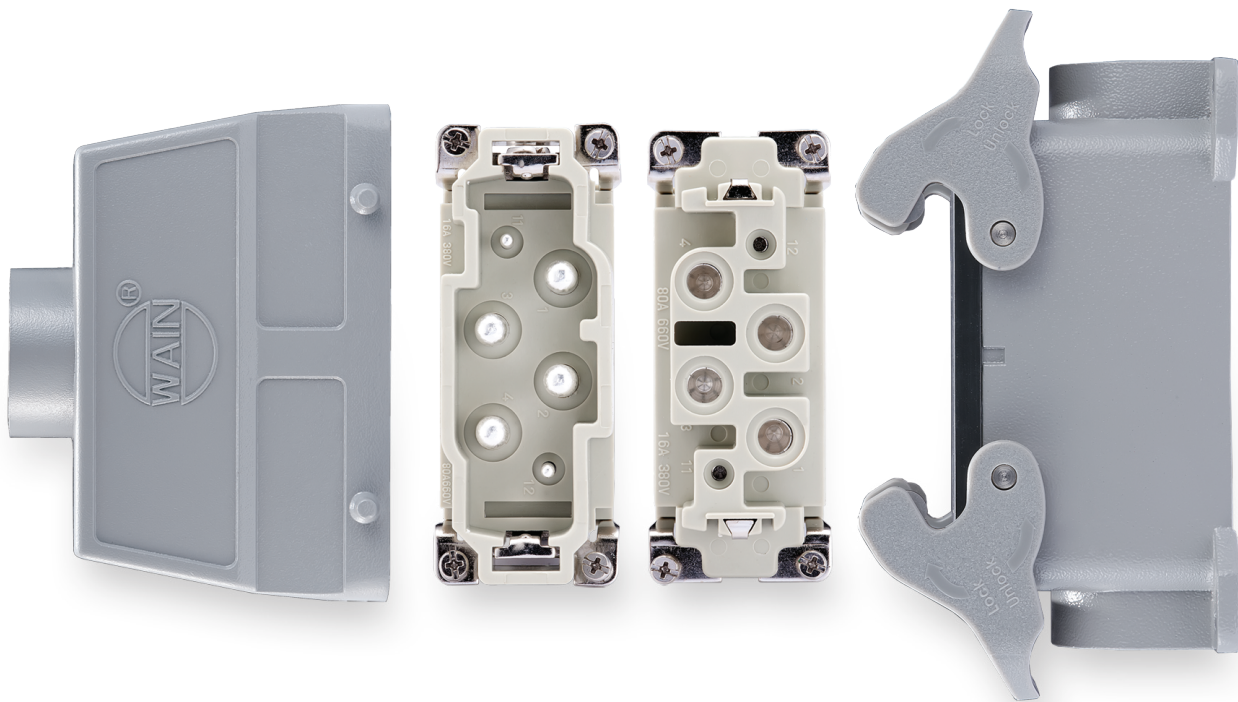
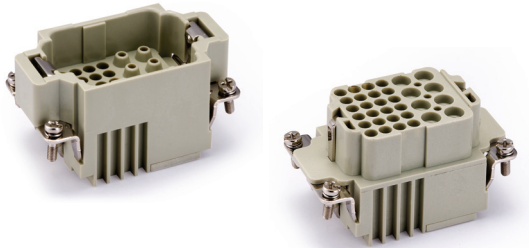


HK SERIES

Combination connector



HK-008/24 Combination inserts



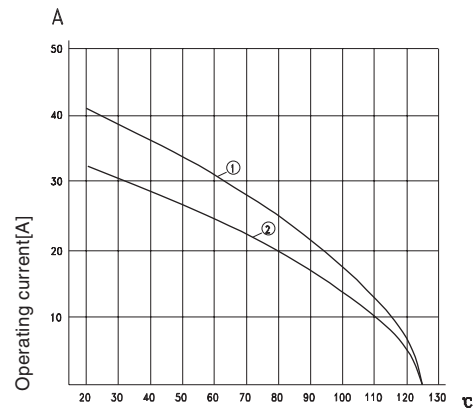
Technical characteristics

Specifications	DIN EN 60 664 DIN EN 61 984
Approvals	
Inserts	
Number of contacts	8/24+PE
Electrical data acc. to EN 61 984	
Power area	
-Rated current	16A
-Rated voltage conductor - ground	230V
-Rated voltage conductor - conductor	400V
-Rated impulse voltage	4kV
-Pollution degree	3
-Pollution degree 2 also	10A 250V 4kV 2
Signal area	
-Rated current	10A
-Rated voltage	160V
-Rated impulse voltage	2.5kV
-Pollution degree	3
Rated voltage acc. to UL/CSA	600/300V
Insulation resistance	$\geq 10^{10}\Omega$
Material	Polyamide
Limiting temperatures	-40°C...+125°C
Flammability acc. to UL 94	V0
Mechanical working life (mating cycles)	≥ 500
Contacts	
Power contacts	
-Material	copper alloy
-Surface	hard-silver plated hard-gold plated
-Contact resistance	$\leq 1\text{m}\Omega$
-Crimp terminal	
-mm ²	0.5-4mm ²
-AWG	20-12
Signal contacts	
-Material	copper alloy
-Surface	hard-silver plated hard-gold plated
-Contact resistance	$\leq 3\text{m}\Omega$
-Crimp terminal	
-mm ²	0.14-2.5mm ²
-AWG	25-14

Current carrying capacity

The current carrying is limited by maximum temperature of materials for inserts and contacts including terminals

Control and test procedures according to DIN EN 60512-5



Ambient temperature [°C]

- ① Wire gauge: 4.0mm²
- ② Wire gauge: 2.5mm²

HK-008/24 Combination inserts

400/160V 16/10A 8/24+⚡

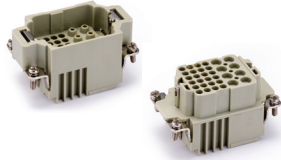


Inserts

Hoods/Housings: size 10B, detail please find the page 16-25-16-35.

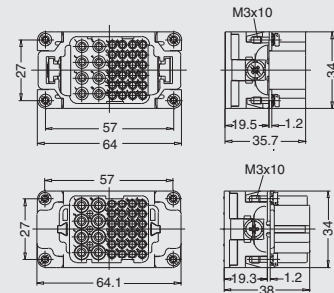
Crimp terminal

Order crimp contacts separately

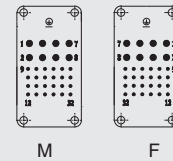


Insert	Designation	Order No.
Male	HK-008/24-MC	03603220100
Female	HK-008/24-FC	03603220200

Distance for contact max. 21 mm



Contact arrangement view from termination side



Accessories

Crimp contacts 10A

silver plated

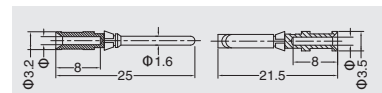


gold plated



More crimp contacts 10A see P17-02.

Male	Order No.	Female	Order No.
CDSM-0.37	08121101000	CDSF-0.37	08121102000
CDSM-0.5	08121103000	CDSF-0.5	08121104000
CDSM-0.75	08121105000	CDSF-0.75	08121106000
CDSM-1.0	08121107000	CDSF-1.0	08121108000
CDSM-1.5	08121109000	CDSF-1.5	08121110000
CDSM-2.5	08121111000	CDSF-2.5	08121112000
CDGM-0.37	08121101010	CDGF-0.37	08121102010
CDGM-0.5	08121103010	CDGF-0.5	08121104010
CDGM-0.75	08121105010	CDGF-0.75	08121106010
CDGM-1.0	08121107010	CDGF-1.0	08121108010
CDGM-1.5	08121109010	CDGF-1.5	08121110010
CDGM-2.5	08121111010	CDGF-2.5	08121112010



M F

Wire gauge	Φ	Stripping length	
0.14-0.37 mm ²	AWG 26-22	0.9	8 mm
0.5 mm ²	AWG 20	1.1	8 mm
0.75 mm ²	AWG 18	1.3	8 mm
1 mm ²	AWG 18	1.45	8 mm
1.5 mm ²	AWG 16	1.75	8 mm
2.5 mm ²	AWG 14	2.25	6 mm

Crimp contacts 16A

silver plated

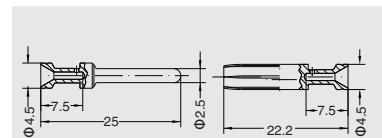


gold plated



More crimp contacts 16A see P17-03.

Male	Order No.	Female	Order No.
CESM-0.37	08121131000	CESF-0.37	08121132000
CESM-0.5	08121133000	CESF-0.5	08121134000
CESM-0.75	08121135000	CESF-0.75	08121136000
CESM-1.0	08121137000	CESF-1.0	08121138000
CESM-1.5	08121139000	CESF-1.5	08121140000
CESM-2.5	08121141000	CESF-2.5	08121142000
CESM-3.0	08121143000	CESF-3.0	08121144000
CESM-4.0	08121145000	CESF-4.0	08121146000
CEGM-0.37	08121131010	CEGF-0.37	08121132010
CEGM-0.5	08121133010	CEGF-0.5	08121134010
CEGM-0.75	08121135010	CEGF-0.75	08121136010
CEGM-1.0	08121137010	CEGF-1.0	08121138010
CEGM-1.5	08121139010	CEGF-1.5	08121140010
CEGM-2.5	08121141010	CEGF-2.5	08121142010
CEGM-3.0	08121143010	CEGF-3.0	08121144010
CEGM-4.0	08121145010	CEGF-4.0	08121146010



M F

Identification	Wire gauge	Stripping length	
no groove	0.14-0.37 mm ²	AWG 26-22	7.5mm
no groove	0.5 mm ²	AWG 20	7.5mm
1 groove	0.75 mm ²	AWG 18	7.5mm
1 groove	1 mm ²	AWG 18	7.5mm
2 groove	1.5 mm ²	AWG 16	7.5mm
3 groove	2.5 mm ²	AWG 14	7.5mm
wide groove	3 mm ²	AWG 12	7.5mm
no groove	4 mm ²	AWG 12	7.5mm

Tools

Crimping tool



Contact removal tool



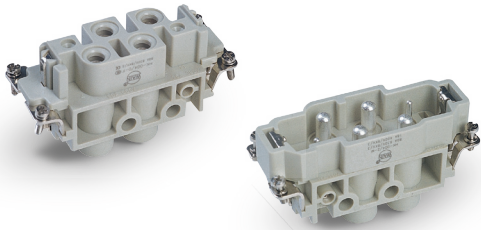
Wire gauge	Designation	Order No.
0.14-4mm ²	TL02G	09100021020

Wire gauge: 16A crimp contacts 0.14-0.37mm² please select TL02 crimping tool.

Application	Designation	Order No.
for crimp contacts 10A	TL00	09100011000
for crimp contacts 16A	TL01	09100012000

More tools detail please find the page 18-13-18-14.

HK-004/0,004/2 Combination inserts



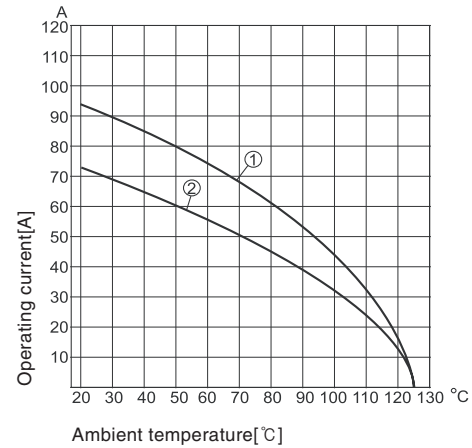
Technical characteristics

Specifications	DIN EN 60 664 DIN EN 61 984
Approvals	
Inserts	
Number of contacts	4/0,4/2+PE
Electrical data acc. to EN 61 984	
Power area	
-Rated current	80A
-Rated voltage	830V
-Rated impulse voltage	8kV
-Pollution degree	3
-Pollution degree 2 also	80A 1000V 8kV 2
Signal area	
-Rated current	16A
-Rated voltage	400V
-Rated impulse voltage	6kV
-Pollution degree	3
-Pollution degree 2 also	16A 400/690V 6kV 2
Rated voltage acc. to UL/CSA	600/300V
Insulation resistance $\geq 1010 \Omega$	$\geq 10^{10} \Omega$
Material	polycarbonate
Limiting temperatures	-40°C...+125°C
Flammability acc. to UL 94	V0
Mechanical working life(mating cycles)	≥ 500
Contacts	
Power contacts	
-Material	copper alloy
-Surface	hard-silver plated
-Contact resistance	$\leq 0.3m\Omega$
-Screw terminal	
- geometric wire gauge	1.5-16mm ²
- AWG	16-6
-Tightening torque	
-mm ²	1.5 2.5 4 6 10 16
-N.m	1.2 2 3 3 3 3
-Stripping length	14mm
Signal contacts	
-Material	copper alloy
-Surface	hard-silver plated
-Contact resistance	$\leq 1m\Omega$
-Screw terminal	
-mm ²	0.5-2.5mm ²
-AWG	20-14
-Tightening torque	0.5Nm
-Stripping length	7.5mm

Current carrying capacity

The current carrying is limited by maximum temperature of materials for inserts and contacts including terminals

Control and test procedures according to DIN EN 60512-5



- ① Wire gauge: 16mm²
- ② Wire gauge: 10mm²

HK-004/0,004/2 Combination inserts

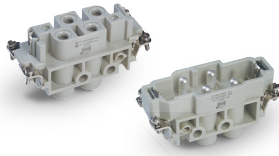
830/400V 80/16A 4/0,4/2+⊕



Inserts

Hoods/Housings: size 16B, detail please find the page 16-42~16-53.

Screw terminal



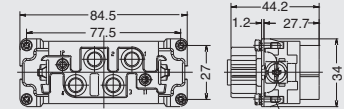
Insert	Designation	Order No.
Male	HK-004/0-M	03600610100
Female	HK-004/0-F	03600610200

Screw terminal

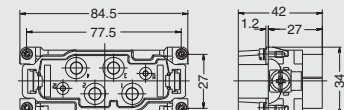


Insert	Designation	Order No.
Male	HK-004/2-M	03600610110
Female	HK-004/2-F	03600610210

Distance for contact max. 21 mm

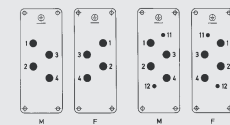


M



F

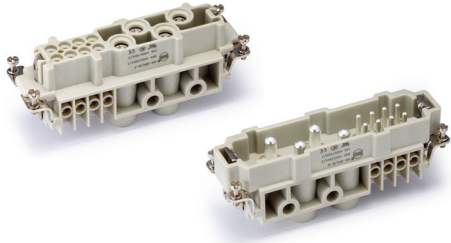
Contact arrangement view from termination side



HK-004/0

HK-004/2

HK-004/8 Combination inserts



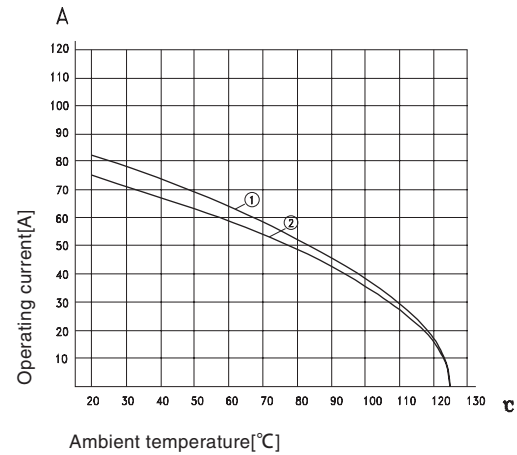
Technical characteristics

Specifications	DIN EN 60 664 DIN EN 61 984
Approvals	
Inserts	
Number of contacts	4/8+PE
Electrical data acc. to EN 61 984	
Power area	
-Rated current	80A
-Rated voltage	400V
-Rated impulse voltage	6kV
-Pollution degree	3
-Pollution degree 2 also	80A 400/690V 6kV 2
Signal area	
-Rated current	16A
-Rated voltage	400V
-Rated impulse voltage	6kV
-Pollution degree	3
Rated voltage acc. to UL/CSA	600/600V
Insulation resistance	$\geq 10^{10}\Omega$
Material	Polyamide
Limiting temperatures	-40°C...+125°C
Flammability acc. to UL 94	V0
Mechanical working life(mating cycles)	≥ 500
Contacts	
Power contacts	
-Material	copper alloy
-Surface	hard-silver plated
-Contact resistance	$\leq 0.3m\Omega$
-Screw terminal	
- geometric wire gauge	1.5-16mm ²
- AWG	16-6
-Tightening torque	
-mm ²	1.5 2.5 4 6 10 16
-N.m	1.2 2 3 3 3 3
-Stripping length	14mm
Signal contacts	
-Material	copper alloy
-Surface	hard-silver plated
-Contact resistance	$\leq 1m\Omega$
-Screw terminal	
-mm ²	0.5-2.5mm ²
-AWG	20-14
-Tightening torque	0.5Nm
-Stripping length	7.5mm

Current carrying capacity

The current carrying is limited by maximum temperature of materials for inserts and contacts including terminals

Control and test procedures according to DIN EN 60512-5



- ① Wire gauge: 16mm²
- ② Wire gauge: 10mm²

HK-004/8 Combination inserts

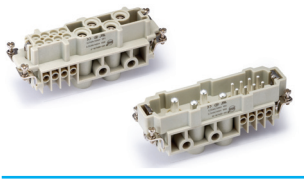
400/400V 80/16A 4/8+⊕



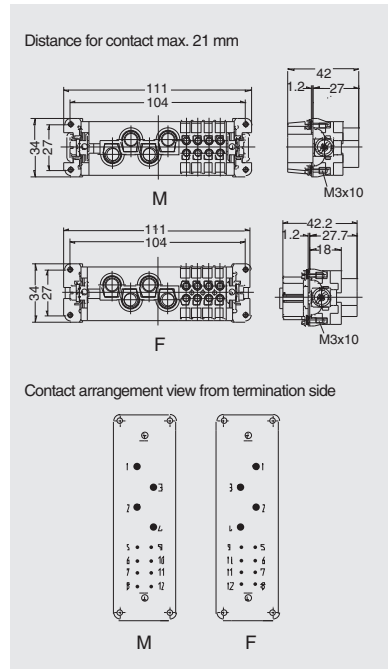
Inserts

Hoods/Housings: size 24B, detail please find the page 16-61~16-73.

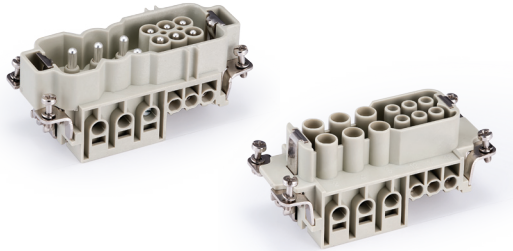
Screw terminal



Insert	Designation	Order No.
Male	HK-004/8-M	03601210100
Female	HK-004/8-F	03601210200



HWK-006/6 Combination inserts



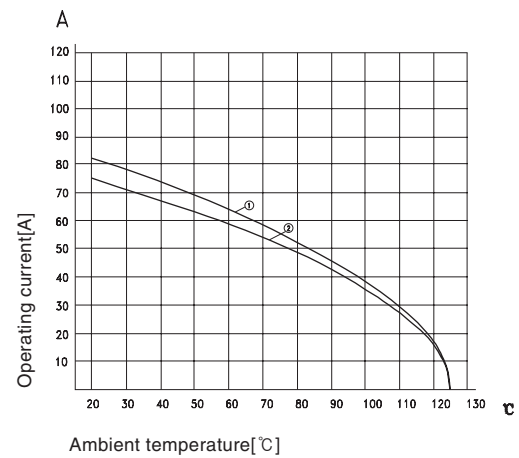
Technical characteristics

Technical characteristics	DIN EN 60 664 DIN EN 61 984
Approvals	
Inserts	
Number of contacts	6/6+PE
Electrical data acc. to EN 61 984	
Power area	
-Rated current	40A
-Rated voltage	400/690V
-Rated impulse voltage	6kV
-Pollution degree	3
Signal area	
-Rated current	16A
-Rated voltage	230/400V
-Rated impulse voltage	4kV
-Pollution degree	3
Rated voltage acc. to UL/CSA	600/600V
Insulation resistanc	$\geq 10^{10}\Omega$
Material	Polyamide
Limiting temperatures	-40°C...+125°C
Flammability acc. to UL 94	V0
Mechanical working life(mating cycles)	≥ 500
Contacts	
Material	copper alloy
Surface	hard-silver plated
Terminal	screw terminal
Contact resistance	
-power area	$\leq 0.3m\Omega$
-signal area	$\leq 1m\Omega$
Wire gauge	
-power area	
-mm ²	4-10mm ²
-AWG	12-8
-signal area	
-mm ²	1-2.5mm ²
-AWG	18-4
Tightening torque	
-power area	mm ² 1.5 2.5 4 6 10 16 N.m 1.2 2 3 3 3 3
-signal area	0.5N.m

Current carrying capacity

The current carrying is limited by maximum temperature of materials for inserts and contacts including terminals

Control and test procedures according to DIN EN 60512-5



- ① Wire gauge: 16mm²
- ② Wire gauge: 10mm²

HWK-006/6 Combination inserts

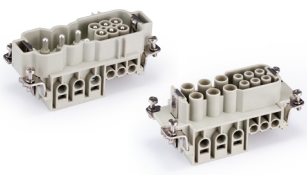
690/400V 40/16A 6/12+⊕



Inserts

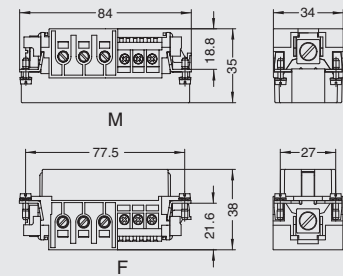
Hoods/Housings: size 16B, detail please find the page 16-42~16-53.

Screw terminal

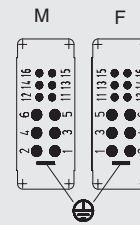


Insert	Designation	Order No.
Male	HWK-006/6-M	03601210120
Female	HWK-006/6-F	03601210220

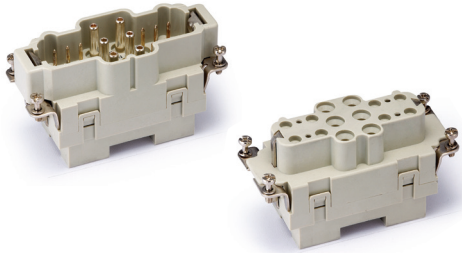
Distance for contact max. 21 mm



Contact arrangement view from termination side



HK-006/12 Combination inserts



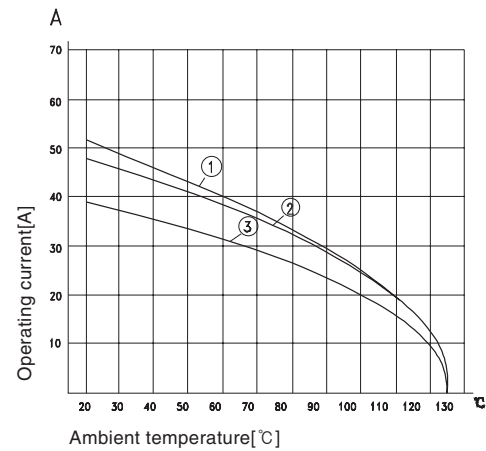
Technical characteristics

Specifications	DIN EN 60 664 DIN EN 61 984
Approvals	
Inserts	
Number of contacts	6/12+PE
Electrical data acc. to EN 61 984	
Power area	
Rated current	40A
Rated voltage	690V
Rated impulse voltage	6kV
Pollution degree	3
Signal area	
Rated current	10A
Rated voltage conductor	230/400V
Rated impulse voltage	4kV
Pollution degree	3
Rated voltage acc. to UL/CSA	600/300V
Insulation resistance	$\geq 10^{10}\Omega$
Material	polycarbonate
Limiting temperatures	-40 °C ... +125 °C
Flammability acc. to UL 94	V0
Mechanical working life(mating cycles)	≥ 500
Contacts	
Power contacts	
-Material	copper alloy
-Surface	hard-silver plated
-Contact resistance	$\leq 0.5m\Omega$
-Axial screw termination	
- geometric wire gauge	2.5-10mm ²
- AWG	14-8
-Max. insulation diameter	6.1mm
-Tightening torque	
-mm ²	2.5 4 6 10
-Nm	1.5 1.5 2 2
-Stripping length	
-mm ²	2.5 4 6 10
-mm	5 ⁺¹ 5 ⁺¹ 8 ⁺¹ 8 ⁺¹
Signal contacts	
-Material	copper alloy
-Surface	hard-silver plated
-Contact resistance	$\leq 3m\Omega$
-Screw terminal	
- geometric wire gauge	0.2-2.5mm ²
- AWG	24-14
-Tightening torque	0.8Nm
-Stripping length	7.5mm

Current carrying capacity

The current carrying is limited by maximum temperature of materials for inserts and contacts including terminals

Control and test procedures according to DIN EN 60512-5



- ① Wire gauge: 10mm²
- ② Wire gauge: 6mm²
- ③ Wire gauge: 4mm²

HK-006/12 Combination inserts

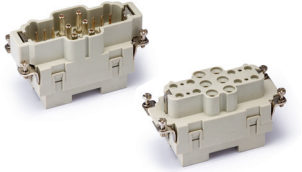
690/400V 40/10A 6/12+⊕



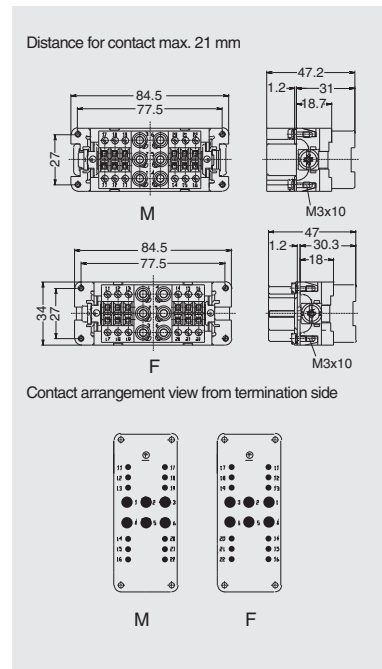
Inserts

Hoods/Housings: size 16B, detail please find the page 16-42~16-53.

Axial screw terminal/Screw terminal



Insert	Designation	Order No.
Male	HK-006.1/12-M(2.5-8mm ²)	03601810100
	HK-006.2/12-M(6-10mm ²)	03601810110
Female	HK-006.1/12-F(2.5-8mm ²)	03601810200
	HK-006.2/12-F(6-10mm ²)	03601810210



HK

Accessories

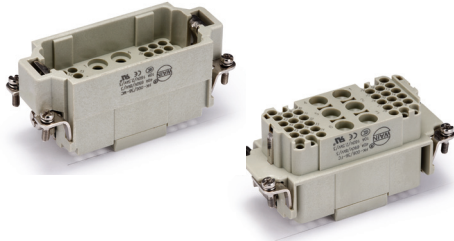
Tool

hexagonal driver



Description	Designation	Order No.
for axial setscrew with grip	SW-2x40	09100060200

HK-006/36 Combination inserts



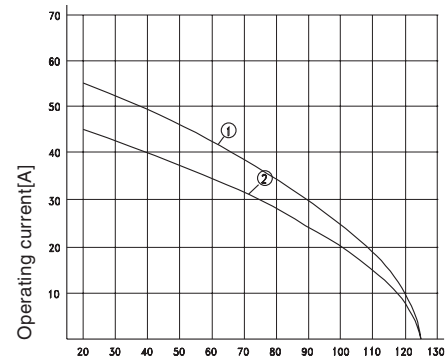
Technical characteristics

Specifications	DIN EN 60 664 DIN EN 61 984
Approvals	
Inserts	
Number of contacts	6/36+PE
Electrical data acc. to EN 61 984	
Power area	
-Rated current	40A
-Rated voltage	690V
-Rated impulse voltage	8kV
-Pollution degree	3
Signal area	
-Rated current	10A
-Rated voltage	160V
-Rated impulse voltage	2.5kV
-Pollution degree	3
-Pollution degree 2 also	10A 250V 4kV 2
Rated voltage acc. to UL/CSA	600/300V
Insulation resistance	$\geq 10^{10}\Omega$
Material	polycarbonate
Limiting temperatures	-40°C...+125°C
Flammability acc. to UL 94	V0
Mechanical working life(mating cycles)	≥ 500
Contacts	
Power contacts	
-Material	copper alloy
-Surface	hard-silver plated hard-gold plated
-Contact resistance	$\leq 0.3m\Omega$
-Crimp terminal	
- mm ²	1.5-6mm ²
- AWG	16-10
-Max. insulation diameter	5mm
Signal contacts	
-Material	copper alloy
-Surface	hard-silver plated hard-gold plated
-Contact resistance	$\leq 3m\Omega$
-Crimp terminal	
- mm ²	0.14-2.5mm ²
- AWG	26-14

Current carrying capacity

The current carrying is limited by maximum temperature of materials for inserts and contacts including terminals

Control and test procedures according to DIN EN 60512-5



Ambient temperature [°C]

- ① Wire gauge: 6.0mm²
- ② Wire gauge: 4.0mm²

HK-006/36 Combination inserts

690/160V 40/10A 6/36+⊕

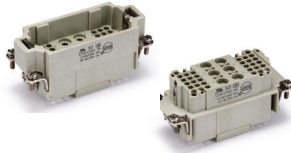


Inserts

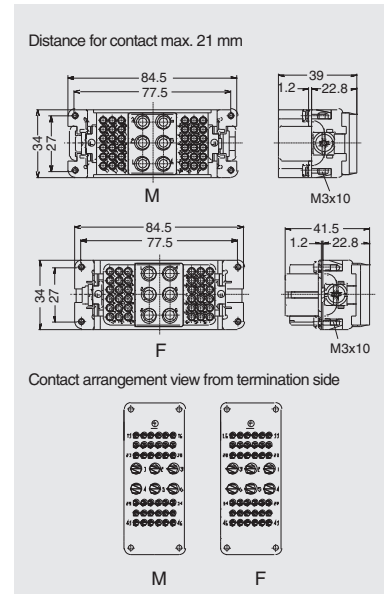
Hoods/Housings: size 16B, detail please find the page 16-42~16-53.

Crimp terminal

Order crimp contacts separately



Insert	Designation	Order No.
Male	HK-006/36-MC	03604220100
Female	HK-006/36-FC	03604220200



Accessories

Crimp contacts 10A

silver plated

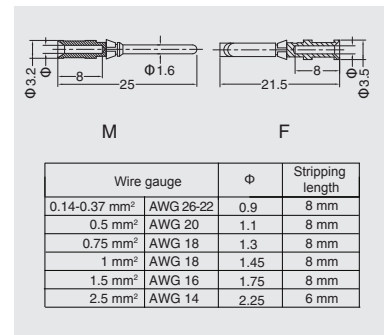


gold plated



More crimp contacts 10A see P17-02.

Male	Designation	Female	Order No.
CDSM-0.37	08121101000	CDSF-0.37	08121102000
CDSM-0.5	08121103000	CDSF-0.5	08121104000
CDSM-0.75	08121105000	CDSF-0.75	08121106000
CDSM-1.0	08121107000	CDSF-1.0	08121108000
CDSM-1.5	08121109000	CDSF-1.5	08121110000
CDSM-2.5	08121111000	CDSF-2.5	08121112000
CDGM-0.37	08121101010	CDGF-0.37	08121102010
CDGM-0.5	08121103010	CDGF-0.5	08121104010
CDGM-0.75	08121105010	CDGF-0.75	08121106010
CDGM-1.0	08121107010	CDGF-1.0	08121108010
CDGM-1.5	08121109010	CDGF-1.5	08121110010
CDGM-2.5	08121111010	CDGF-2.5	08121112010



Crimp contacts 40A

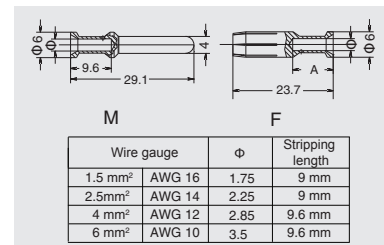
silver plated



gold plated



Male	Designation	Female	Order No.
CCSM-1.5	08121151000	CCSF-1.5	08121161000
CCSM-2.5	08121152000	CCSF-2.5	08121162000
CCSM-4.0	08121153000	CCSF-4.0	08121163000
CCSM-6.0	08121154000	CCSF-6.0	08121164000
CCGM-1.5	08121151010	CCGF-1.5	08121161010
CCGM-2.5	08121152010	CCGF-2.5	08121162010
CCGM-4.0	08121153010	CCGF-4.0	08121163010
CCGM-6.0	08121154010	CCGF-6.0	08121164010



Tools

Crimping tool

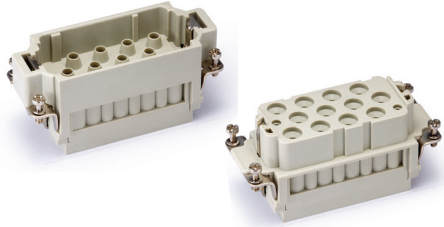


Contact removal tool



Wire gauge	Designation	Order No.
0.14-4mm ²	TL02G	09100021020
1.5-6mm ²	TL02-OG	09100021120
Application	Designation	Order No.
for crimp contacts 10A	TL00	09100011000
Application	Designation	Order NO.
for crimp contacts 40A	TL06	09100013000

HK-012/2 Combination inserts



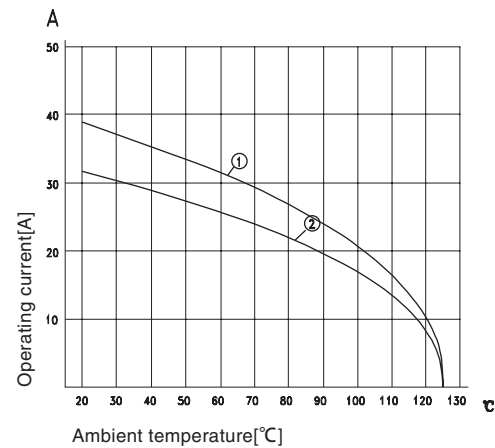
Technical characteristics

Specifications	DIN EN 60 664 DIN EN 61 984
Approvals	
Inserts	
Number of contacts	12/2+PE
Electrical data acc. to EN 61 984	
Power area	
-Rated current	40A
-Rated voltage	690V
-Rated impulse voltage	8kV
-Pollution degree	3
Signal area	
-Rated current	10A
-Rated voltage	250V
-Rated impulse voltage	4kV
-Pollution degree	3
Rated voltage acc. to UL/CSA	600/300V
Insulation resistance	$\geq 10^{10}\Omega$
Material	polycarbonate
Limiting temperatures	-40°C...+125°C
Flammability acc. to UL 94	V0
Mechanical working life(mating cycles)	≥ 500
Contacts	
Power contacts	
-Material	copper alloy
-Surface	hard-silver plated hard-gold plated
-Contact resistance	$\leq 0.3m\Omega$
-Crimp terminal	
- mm ²	1.5-6mm ²
- AWG	16-10
Signal contacts	
-Material	copper alloy
-Surface	hard-silver plated hard-gold plated
-Contact resistance	$\leq 3m\Omega$
-Crimp terminal	
- mm ²	0.14-2.5mm ²
- AWG	26-14

Current carrying capacity

The current carrying is limited by maximum temperature of materials for inserts and contacts including terminals

Control and test procedures according to DIN EN 60512-5



- ① Wire gauge: 6.0mm²
- ② Wire gauge: 4.0mm²

HK-012/2 Combination inserts

690/250V 40/10A 12/2+⊕

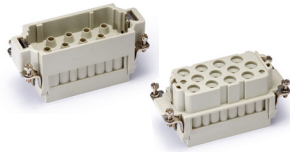


Inserts

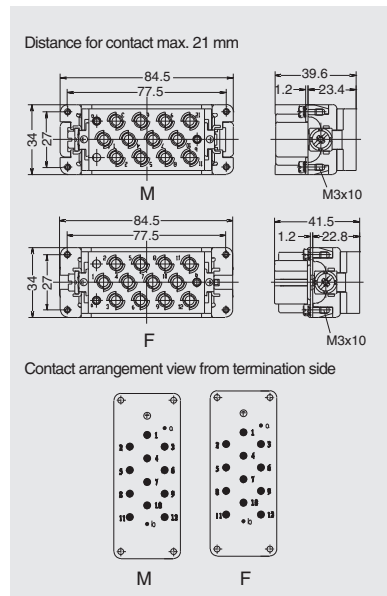
Hoods/Housings: size 16B, detail please find the page 16-42~16-53.

Crimp terminal

Order crimp contacts separately



Insert	Designation	Order No.
Male	HK-012/2-MC	03601420100
Female	HK-012/2-FC	03601420200



Accessories

Crimp contacts 10A

silver plated

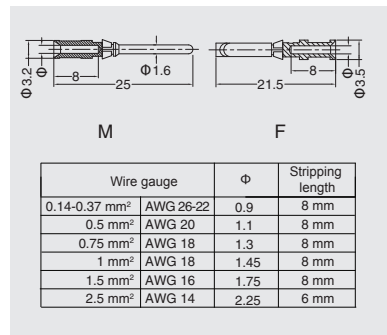


gold plated



More crimp contacts 10A see P17-02.

Male	Designation	Female	Order No.
CDSM-0.37	08121101000	CDSF-0.37	08121102000
CDSM-0.5	08121103000	CDSF-0.5	08121104000
CDSM-0.75	08121105000	CDSF-0.75	08121106000
CDSM-1.0	08121107000	CDSF-1.0	08121108000
CDSM-1.5	08121109000	CDSF-1.5	08121110000
CDSM-2.5	08121111000	CDSF-2.5	08121112000
CDGM-0.37	08121101010	CDGF-0.37	08121102010
CDGM-0.5	08121103010	CDGF-0.5	08121104010
CDGM-0.75	08121105010	CDGF-0.75	08121106010
CDGM-1.0	08121107010	CDGF-1.0	08121108010
CDGM-1.5	08121109010	CDGF-1.5	08121110010
CDGM-2.5	08121111010	CDGF-2.5	08121112010



Crimp contacts 40A

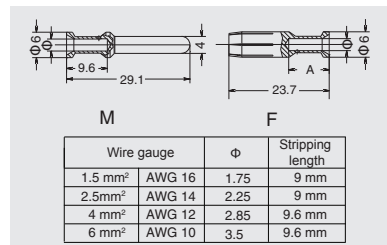
silver plated



gold plated



Male	Designation	Female	Order No.
CCSM-1.5	08121151000	CCSF-1.5	08121161000
CCSM-2.5	08121152000	CCSF-2.5	08121162000
CCSM-4.0	08121153000	CCSF-4.0	08121163000
CCSM-6.0	08121154000	CCSF-6.0	08121164000
CCGM-1.5	08121151010	CCGF-1.5	08121161010
CCGM-2.5	08121152010	CCGF-2.5	08121162010
CCGM-4.0	08121153010	CCGF-4.0	08121163010
CCGM-6.0	08121154010	CCGF-6.0	08121164010



Tools

Crimping tool



Contact removal tool



Wire gauge	Designation	Order No.
0.14-4mm ²	TL02G	09100021020
1.5-6mm ²	TL02-0G	09100021120
Application	Designation	Order No.
for crimp contacts 10A	TL00	09100011000
Application	Designation	Order NO.
for crimp contacts 40A	TL06	09100013000

HK-006/6 Combination inserts



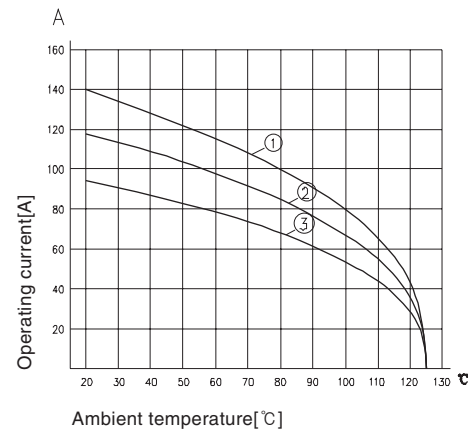
Technical characteristics

Specifications	DIN EN 60 664 DIN EN 61 984
Approvals	
Inserts	
Number of contacts	6/6+PE
Electrical data acc. to EN 61 984	
Power area	
-Rated current	100A
-Rated voltage	690V
-Rated impulse voltage	8kV
-Pollution degree	3
-Pollution degree 2 also	100A 1000V 8kV 2
Signal area	
-Rated current	16A
-Rated voltage	400V
-Rated impulse voltage	6kV
-Pollution degree	3
Rated voltage acc. to UL	600/300V
Rated voltage acc. to CSA	600/600V
Rated current acc. to CSA	100/15A
Insulation resistance	$\geq 10^{10}\Omega$
Material	polycarbonate
Limiting temperatures	-40°C...+125°C
Flammability acc. to UL 94	V0
Mechanical working life(mating cycles)	≥ 500
Contacts	
Power contacts	
-Material	copper alloy
-Surface	hard-silver plated
-Contact resistance	$\leq 0.5m\Omega$
-Axial screw termination	
- geometric wire gauge	16-35mm ²
- AWG	5-2
-Max. insulation diameter	11.4mm
-Tightening torque	
-mm ²	16 25 35
-Nm	6 7 8
-Stripping length	13 ⁺¹ mm
Signal contacts	
-Material	copper alloy
-Surface	hard-silver plated
-Contact resistance	$\leq 3m\Omega$
-Screw terminal	
- geometric wire gauge	0.2-2.5mm ²
- AWG	24-13
-Tightening torque	0.8Nm
-Stripping length	7.5mm

Current carrying capacity

The current carrying is limited by maximum temperature of materials for inserts and contacts including terminals

Control and test procedures according to DIN EN 60512-5



- ① Wire gauge: 35mm²
- ② Wire gauge: 25mm²
- ③ Wire gauge: 16mm²

HK-006/6 Combination inserts

690/400V 100/16A 6/6+⊕



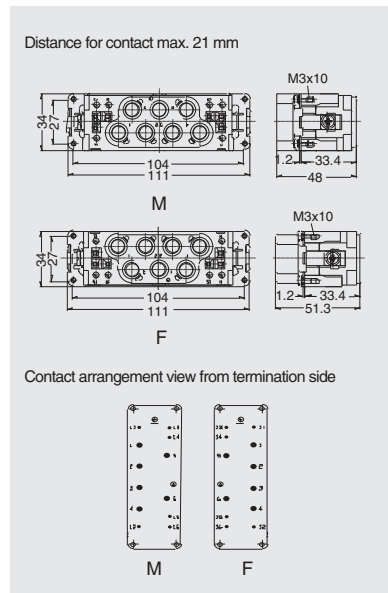
Inserts

Hoods/Housings: size 24B, detail please find the page 16-61~16-73.

Axial screw terminal/Screw terminal



Insert	Designation	Order No.
Male	HK-006/6-M	03601210110
Female	HK-006/6-F	03601210210



Accessories

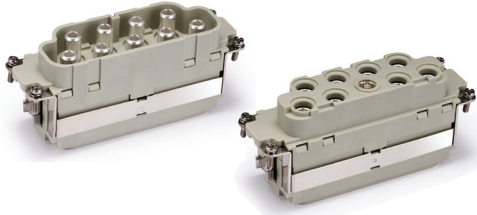
Tool

hexagonal driver



Description	Designation	Order No.
for axial setscrew with grip	SW-4x100	09100060100

HK-008/0 Combination inserts



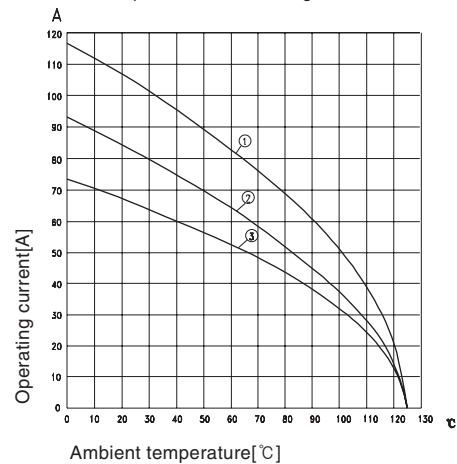
Technical characteristics

Specifications	DIN EN 60 664 DIN EN 61 984
Approvals	
Inserts	
Number of contacts	8/0+PE
Electrical data acc. to EN 61 984	
Power area	
Rated current	100A
Rated voltage	690V
Rated impulse voltage	8kV
Pollution degree	3
Pollution degree 2 also	100A 1000V 8kV 2
Rated voltage acc. to UL	600V
Rated current acc. to UL	82A
Insulation resistance	$\geq 10^{10}\Omega$
Material	polycarbonate
Limiting temperatures	-40°C...+125°C
Flammability acc. to UL 94	V0
Mechanical working life(mating cycles)	≥ 500
Contacts	
Material	copper alloy
Surface	hard-silver plated
Contact resistance	$\leq 0.5m\Omega$
Axial screw termination	
- geometric wire gauge	10-25mm ²
- AWG	7-3
Max. insulation diameter	11.4mm
Tightening torque	
-mm ²	10 16 25
-Nm	6 6 7
Stripping length	13 ⁺¹ mm

Current carrying capacity


The current carrying is limited by maximum temperature of materials for inserts and contacts including terminals

Control and test procedures according to DIN EN 60512-5



- ① Wire gauge: 25mm²
- ② Wire gauge: 16mm²
- ③ Wire gauge: 10mm²

HK-008/0 Combination inserts

690V 100A 8/0+ 



Inserts

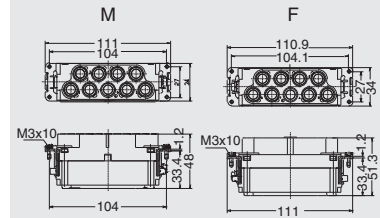
Hoods/Housings: size **24B**, detail please find the page 16-61~16-73.

Axial screw termination

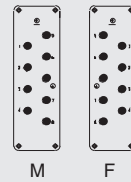


Insert	Designation	Order No.
Male	HK-008/0-M	03600810100
Female	HK-008/0-F	03600810200

Distance for contact max. 21 mm



Contact arrangement view from termination side



Accessories

Tool

hexagonal driver



Description	Designation	Order No.
for axial setscrew with grip	SW-4x100	09100060100