

HQ SERIES

Compact connector



HQ-002 Compact inserts



HQ

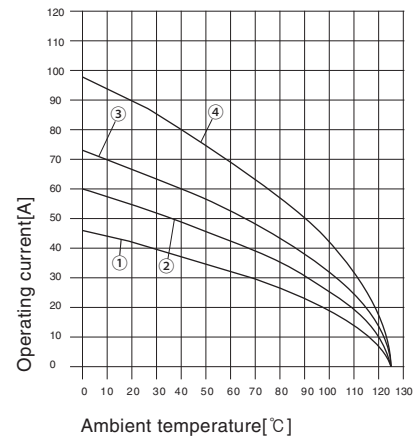
Technical characteristics

Specifications	DIN EN 60 664 DIN EN 61 984
Approvals	
Inserts	
Number of contacts	2+PE
Electrical data acc. to EN 61 984	
-Rated current	40A
-Rated voltage	830V
-Rated impulse voltage	6kV
-Pollution degree	3
Rated voltage acc. to UL/CSA	600V
Insulation resistance	$\geq 10^{10} \Omega$
Material polycarbonate	polycarbonate
Limiting temperatures	-40 °C ... +125 °C
Flammability acc. to UL 94	V0
Mechanical working life(mating cycles)	≥ 500
Contacts	
Material	copper alloy
Surface	hard-silver plated
Contact resistance	$\leq 1m\Omega$
Axial screw termination	
- mm ²	2.5-10mm ²
- AWG	14-8
Tightening torque	1.8Nm
Stripping length	8mm ⁺¹
Hoods/Housings	
Plastic hoods/housings	
-Material	polycarbonate
-Flammability acc. to UL 94	V0
-Degree of protection acc. to DIN EN 60 529 for coupled connector	IP67
Hoods/Housings, metal	
-Material	zinc die-cast
-Degree of protection acc. to DIN EN 60 529 for coupled connector	IP44
	IP 67 is achieved with seal screw

Current carrying capacity

The current carrying is limited by maximum temperature of materials for inserts and contacts including terminals

Control and test procedures according to DIN EN 60512-5



- ① Wire gauge: 2.5 mm²
- ② Wire gauge: 4 mm²
- ③ Wire gauge: 6 mm²
- ④ Wire gauge: 10 mm²

HQ-002 Compact inserts

830V 40A 2+ 



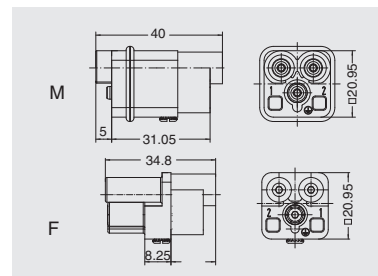
Inserts

Hoods/Housings: size 3A, detail please find the page 16-04~16-10.

Axial screw termination



Insert	Designation	Order No.
Male	HQ-002.1-M (2.5-6.0mm ²)	03700210120
	HQ-002.2-M (4-10mm ²)	03700210110
Female	HQ-002.1-F (2.5-6.0mm ²)	03700210220
	HQ-002.2-F (4-10mm ²)	03700210210



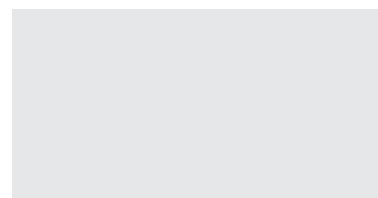
Accessories

Tool

Hex key SW 2



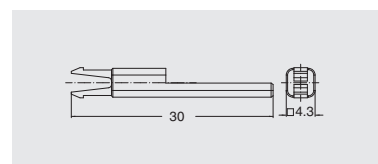
Description	Designation	Order No.
for axial setscrew with grip	SW-2x40	09100060200



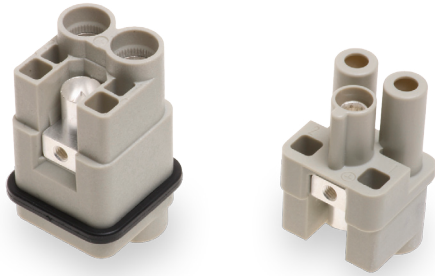
Coding element



Description	Designation	Order No.
coding, pokayoke	CODE-Q2	08131109400



HQV-002 Compact inserts



HQ

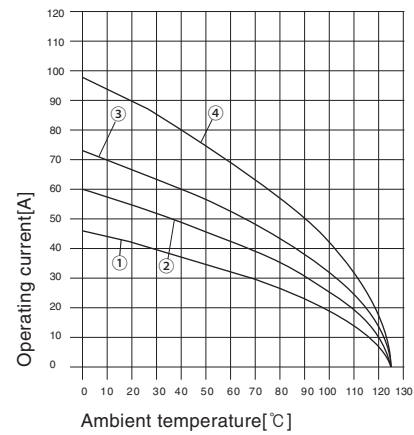
Technical characteristics

Specifications	DIN EN 60 664 DIN EN 61 984
Approvals	
Inserts	
Number of contacts	2+PE
Electrical data acc. to EN 61 984	
-Rated current	40A
-Rated voltage	400V
-Rated impulse voltage	6kV
-Pollution degree	3
Rated voltage acc. to UL/CSA	400V
Insulation resistance	$\geq 10^{10} \Omega$
Material	polycarbonate
Limiting temperatures	-40 °C ... +125 °C
Flammability acc. to UL 94	V0
Mechanical working life(mating cycles)	≥ 500
Contacts	
Material	copper alloy
Surface	hard-silver plated
Contact resistance	$\leq 1 m\Omega$
Axial screw termination	
- mm ²	2.5-10mm ²
- AWG	14-8
Tightening torque	1.8Nm
Stripping length	8mm ⁺¹
Hoods/Housings	
Plastic hoods/housings	
-Material	polycarbonate
-Flammability acc. to UL 94	V0
-Degree of protection acc. to DIN EN 60 529 for coupled connector	IP67
Hoods/Housings, metal	
-Material	zinc die-cast
-Degree of protection acc. to DIN EN 60 529 for coupled connector	IP44
	IP 67 is achieved with seal screw

Current carrying capacity

The current carrying is limited by maximum temperature of materials for inserts and contacts including terminals

Control and test procedures according to DIN EN 60512-5



- ① Wire gauge: 2.5 mm²
- ② Wire gauge: 4 mm²
- ③ Wire gauge: 6 mm²
- ④ Wire gauge: 10 mm²

HQV-002 Compact inserts

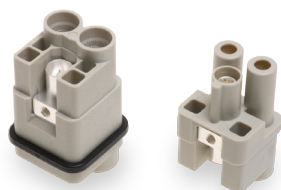
400V 40A 2+ 



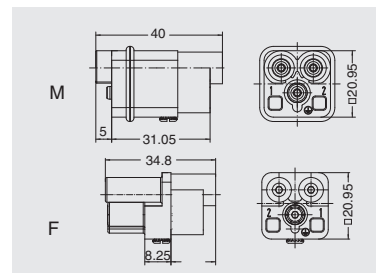
Inserts

Hoods/Housings: size3A,detail please find the page16-04~16-10.

Axial screw termination



Insert	Designation	Order No.
Male	HQV-002.1-M (2.5-6.0mm ²)	03700210130
	HQV-002.2-M (4-10mm ²)	03700210100
Female	HQV-002.1-F (2.5-6.0mm ²)	03700210230
	HQV-002.2-F (4-10mm ²)	03700210200



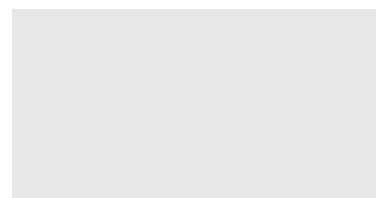
Accessories

Tool

Hex key SW 2



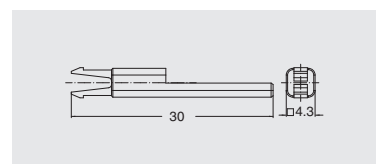
Description	Designation	Order No.
for axial setscrew with grip	SW-2x40	09100060200



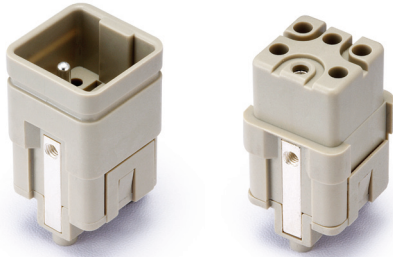
Coding element



Description	Designation	Order No.
coding, pokayoke	CODE-Q2	08131109400



HQ-005/0 Compact inserts



HQ

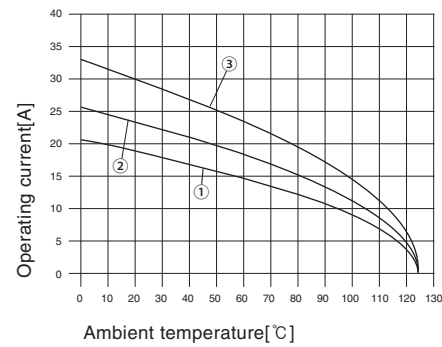
Technical characteristics

Specifications	DIN EN 60 664 DIN EN 61 984
Approvals	
Inserts	
Number of contacts	5+PE
Electrical data acc. to EN 61 984	
-Rated current	16A
-Rated voltage conductor - ground	230V
-Rated voltage conductor - conductor	400V
-Rated impulse voltage	4kV
-Pollution degree	3
-Pollution degree 2 also	16A 320/500V 4kV 2
Rated voltage acc. to UL/CSA	600V
Insulation resistance	$\geq 10^{10}\Omega$
Material	polycarbonate
Limiting temperatures	-40°C ... +125°C
Flammability acc. to UL 94	V0
Mechanical working life(mating cycles)	≥ 500
Contacts	
Material	copper alloy
Surface	hard-silver plated hard-gold plated
Contact resistance	$\leq 1\text{m}\Omega$
Crimp terminal	
- mm ²	0.14-2.5mm ²
- AWG	26-14
PE screw terminal	
- mm ²	2.5mm ²
- AWG	14
Hoods/Housings	
Plastic hoods/housings	
-Material	polycarbonate
-Flammability acc. to UL 94	V0
-Degree of protection acc. to DIN EN 60 529 for coupled connector	IP67
Hoods/Housings, metal	
-Material	zinc die-cast
-Degree of protection acc. to DIN EN 60 529 for coupled connector	IP44 IP 67 is achieved with seal screw

Current carrying capacity

The current carrying is limited by maximum temperature of materials for inserts and contacts including terminals

Control and test procedures according to DIN EN 60512-5



Ambient temperature[°C]

- ① Wire gauge: 1.0 mm²
- ② Wire gauge: 1.5 mm²
- ③ Wire gauge: 2.5 mm²

HQ-005/0 Compact inserts

230/400V 16A 5+⊕



Inserts

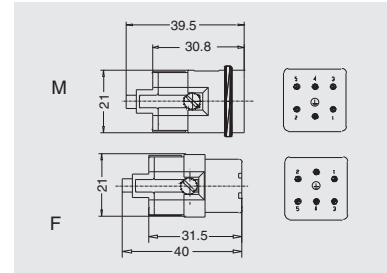
Hoods/Housings: size 3A, detail please find the page 16-04~16-10.

Crimp terminal

order crimp contacts separately



Insert	Designation	Order No.
Male	HQ-005/0-MC	03700520100
Female	HQ-005/0-FC	03700520200



Accessories

Crimp contacts 16A

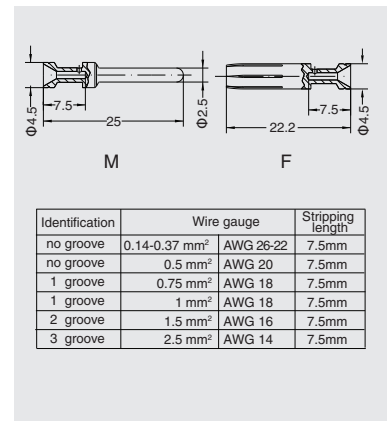
contact resistance $\leq 1m\Omega$
silver plated



gold plated



Male	Order No.	Female	Order No.
CESM-0.37	08121131000	CESF-0.37	08121132000
CESM-0.5	08121133000	CESF-0.5	08121134000
CESM-0.75	08121135000	CESF-0.75	08121136000
CESM-1.0	08121137000	CESF-1.0	08121138000
CESM-1.5	08121139000	CESF-1.5	08121140000
CESM-2.5	08121141000	CESF-2.5	08121142000
CEGM-0.37	08121131010	CEGF-0.37	08121132010
CEGM-0.5	08121133010	CEGF-0.5	08121134010
CEGM-0.75	08121135010	CEGF-0.75	08121136010
CEGM-1.0	08121137010	CEGF-1.0	08121138010
CEGM-1.5	08121139010	CEGF-1.5	08121140010
CEGM-2.5	08121141010	CEGF-2.5	08121142010



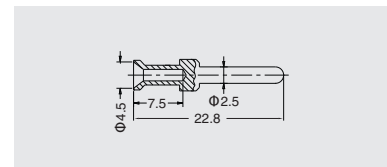
More crimp contacts 16A see P17-03.

Relay contacts

silver plated



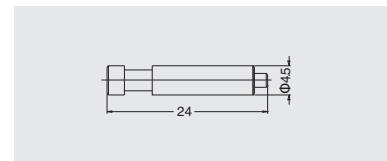
Wire gauge(mm ²)	Designation	Order No.
1	CESM-1.0R	08121137300
1.5	CESM-1.5R	08121139300
2.5	CESM-2.5R	08121141300



Coding element



Description	Designation	Order No.
coding, pokayoke	CODE-E	08131109200



Tools

Crimping tool



Contact removal tool



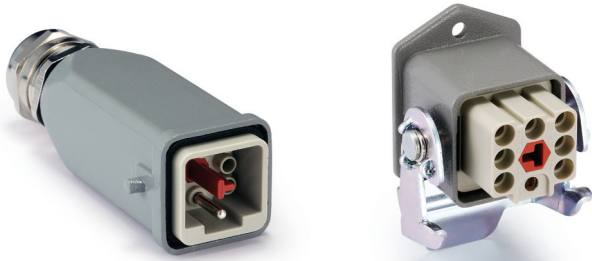
Wire gauge	Designation	Order No.
0.5-4mm ²	TL02G	09100021020

Wire gauge: 0.14-0.37mm² please select TL02 Crimping tool.

Application	Designation	Order No.
for crimp contacts 16A	TL01	09100012000

More tools detail please find the page 18-13~18-14.

HQ-007 Compact inserts



HQ

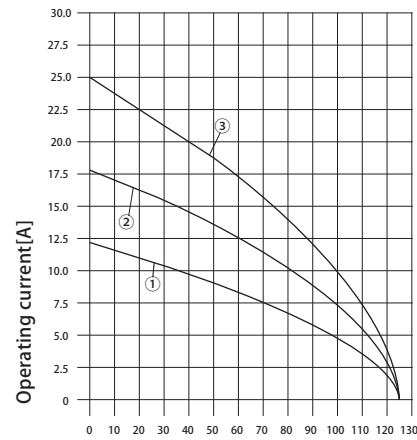
Technical characteristics

Specifications	DIN EN 60 664 DIN EN 61 984
Approvals	
Inserts	
Number of contacts	7+PE
Electrical data acc. to EN 61 984	
-Rated current	10A
-Rated voltage	400V
-Rated impulse voltage	6kV
-Pollution degree	3
-Pollution degree 2 also	10A 400/690V 6kV 2
Rated voltage acc. to UL/CSA	600V
Insulation resistance	$\geq 10^{10}\Omega$
Material	polycarbonate
Limiting temperatures	-40°C ... +125°C
Flammability acc. to UL 94	V0
Mechanical working life(mating cycles)	≥ 500
Contacts	
Material	copper alloy
Surface	hard-silver plated hard-gold plated
Contact resistance	$\leq 3m\Omega$
Crimp terminal	
- mm ²	0.14-2.5mm ²
- AWG 26 ... 14	26-14
PE screw terminal	
- mm ²	2.5mm ²
- AWG	14
Hoods/Housings	
Plastic hoods/housings	
-Material	polycarbonate
-Flammability acc. to UL 94	V0
-Degree of protection acc. to DIN EN 60 529 for coupled connector	IP67
Hoods/Housings, metal	
-Material	zinc die-cast
-Degree of protection acc. to DIN EN 60 529 for coupled connector	IP44 IP 67 is achieved with seal screw

Current carrying capacity

The current carrying is limited by maximum temperature of materials for inserts and contacts including terminals

Control and test procedures according to DIN EN 60512-5



Ambient temperature[°C]

① Wire gauge: 0.75 mm²

② Wire gauge: 1.5 mm²

③ Wire gauge: 2.5 mm²

HQ-007 Compact inserts

400V 10A 7+ 



Inserts

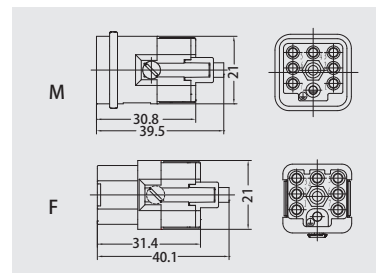
Hoods/Housings: size 3A, detail please find the page 16-04~16-10.

Crimp terminal

order crimp contacts separately



Insert	Designation	Order No.
Male	HQ-007/0-MC	03700720100
Female	HQ-007/0-FC	03700720200



Accessories

Crimp contacts 10A

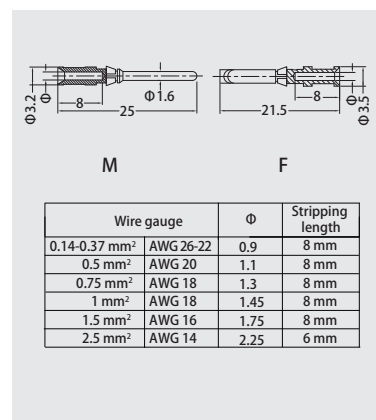
contact resistance $\leq 3m\Omega$
silver plated



gold plated

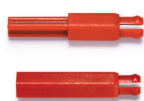


Male	Order No.	Female	Order No.
CDSM-0.37	08121101000	CDSF-0.37	08121102000
CDSM-0.5	08121103000	CDSF-0.5	08121104000
CDSM-0.75	08121105000	CDSF-0.75	08121106000
CDSM-1.0	08121107000	CDSF-1.0	08121108000
CDSM-1.5	08121109000	CDSF-1.5	08121110000
CDSM-2.5	08121111000	CDSF-2.5	08121112000
CDGM-0.37	08121101010	CDGF-0.37	08121102010
CDGM-0.5	08121103010	CDGF-0.5	08121104010
CDGM-0.75	08121105010	CDGF-0.75	08121106010
CDGM-1.0	08121107010	CDGF-1.0	08121108010
CDGM-1.5	08121109010	CDGF-1.5	08121110010
CDGM-2.5	08121111010	CDGF-2.5	08121112010

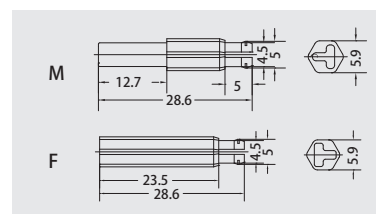


More crimp contacts 10A see P17-02.

Coding element



Description	Category	Designation	Order No.
coding, pokayoke	Male	CODE-Q7M	08131106100
	Female	CODE-Q7F	08131106200



Tools

Crimping tool



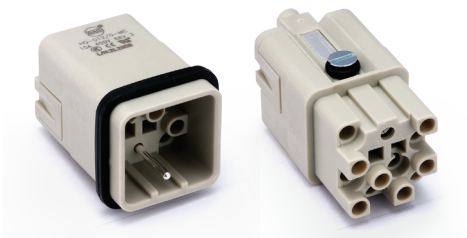
Contact removal tool



Wire gauge	Designation	Order No.
0.14-4mm ²	TL02G	09100021020
Application	Designation	Order No.
for crimp contacts 10A	TL00	09100011000

More tools detail please find the page 18-13~18-14.

HQ-012/0 Compact inserts



HQ

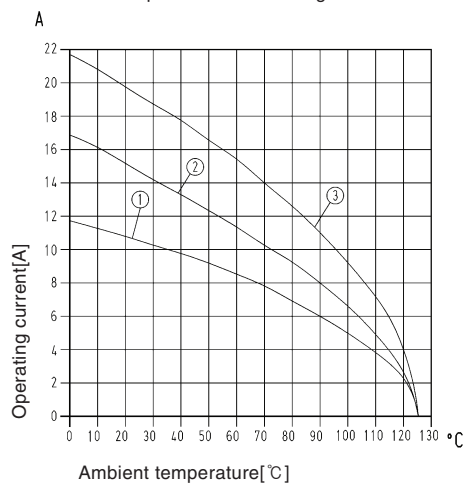
Technical characteristics

Specifications	DIN EN 60 664 DIN EN 61 984
Approvals	
Inserts	
Number of contacts	12+PE
Electrical data acc. to EN 61 984	
-Rated current	10A
-Rated voltage	400V
-Rated impulse voltage	6kV
-Pollution degree	3
-Pollution degree 2 also	10A 400/690V 6kV 2
Rated voltage acc. to UL/CSA	600V
Insulation resistance	$\geq 10^{10} \Omega$
Material	polycarbonate
Limiting temperatures	-40 °C ... +125 °C
Flammability acc. to UL 94	V0
Mechanical working life(mating cycles)	≥ 500
Contacts	
Material	copper alloy
Surface	hard-silver plated hard-gold plated
Contact resistance	$\leq 3m\Omega$
Crimp terminal	
- mm ²	0.14-2.5mm ²
- AWG	26-14
PE contact	
- mm ²	0.5-2.5mm ²
- AWG	20-14
Hoods/Housings	
Plastic hoods/housings	
-Material	polycarbonate
-Flammability acc. to UL 94	V0
-Degree of protection acc. to DIN EN 60 529 for coupled connector	IP67
Hoods/Housings, metal	
-Material	zinc die-cast
-Degree of protection acc. to DIN EN 60 529 for coupled connector	IP44 IP 67 is achieved with seal screw

Current carrying capacity

The current carrying is limited by maximum temperature of materials for inserts and contacts including terminals

Control and test procedures according to DIN EN 60512-5



- ① Wire gauge: 0.75 mm²
- ② Wire gauge: 1.5 mm²
- ③ Wire gauge: 2.5 mm²

HQ-012/0 Compact inserts

400V 10A 12+



Inserts

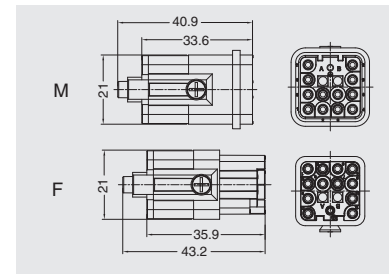
Hoods/Housings: size 3A, detail please find the page 16-04~16-10.

Crimp terminal

order crimp contacts separately



Insert	Designation	Order No.
Male	HQ-012/0-MC	03701220100
Female	HQ-012/0-FC	03701220200



Accessories

Crimp contacts 10A

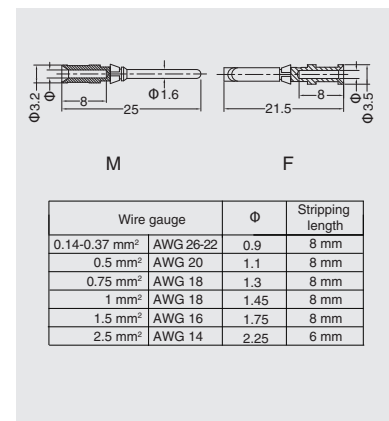
contact resistance $\leq 3m\Omega$
silver plated



gold plated



Male	Order No.	Female	Order No.
CDSM-0.37	08121101000	CDSF-0.37	08121102000
CDSM-0.5	08121103000	CDSF-0.5	08121104000
CDSM-0.75	08121105000	CDSF-0.75	08121106000
CDSM-1.0	08121107000	CDSF-1.0	08121108000
CDSM-1.5	08121109000	CDSF-1.5	08121110000
CDSM-2.5	08121111000	CDSF-2.5	08121112000
CDGM-0.37	08121101010	CDGF-0.37	08121102010
CDGM-0.5	08121103010	CDGF-0.5	08121104010
CDGM-0.75	08121105010	CDGF-0.75	08121106010
CDGM-1.0	08121107010	CDGF-1.0	08121108010
CDGM-1.5	08121109010	CDGF-1.5	08121110010
CDGM-2.5	08121111010	CDGF-2.5	08121112010

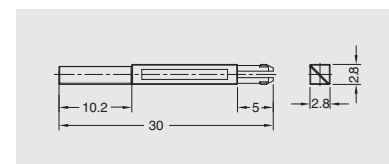


More crimp contacts 10A see P17-02.

Coding element



Description	Designation	Order No.
coding, pokayoke	CODE-Q12	08131106300



Tools

Crimping tool



Wire gauge	Designation	Order No.
0.14-4mm ²	TL02G	09100021020

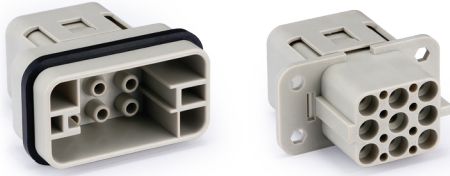
Contact removal tool



Application	Designation	Order No.
for crimp contacts 10A	TL00	09100011000

More tools detail please find the page 18-13~18-14.

HQ-008/0 Compact inserts



HQ

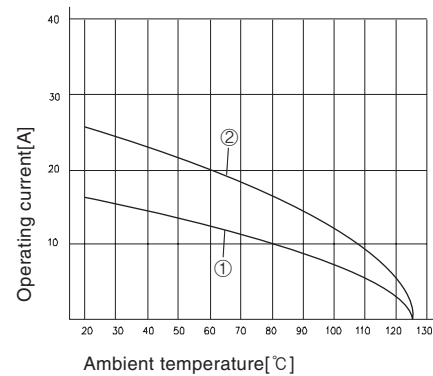
Technical characteristics

Specifications	DIN EN 60 664 DIN EN 61 984
Approvals	
Inserts	
Number of contacts	8+PE
Electrical data acc. to EN 61 984	
-Rated current	16A
-Rated voltage	500V
-Rated impulse voltage	6kV
-Pollution degree	3
-Pollution degree 2 also	16A 400/690V 6kV 2
-Mounted metal hood	16A 230/400V 4kV 3
Rated voltage acc. to UL/CSA	600V
Insulation resistance	$\geq 10^{10} \Omega$
Material	polycarbonate
Limiting temperatures	-40 °C ... +125 °C
Flammability acc. to UL 94	V0
Mechanical working life (mating cycles)	≥ 500
Contacts	
Material	copper alloy
Surface	hard-silver plated hard-gold plated
Contact resistance	$\leq 1 \text{ m}\Omega$
Crimp terminal	
- mm ²	0.14-4mm ² partly loaded up to 4 mm ² is possible
- AWG	26-12
Hoods/Housings	
Plastic hoods/housings	
Material	thermoplastic
-Locking element	Polyamide
-Hoods/Housings seal	NBR
-Limiting temperatures	-40 °C ... +125 °C
-Flammability acc. to UL 94	V0
-Degree of protection acc. to DIN EN 60 529 for coupled connector	IP65
Hoods/Housings, metal	
-Material	metal
-Locking element	Stainless steel
-Hoods/Housings seal	NBR
-Limiting temperatures	-40 °C ... +125 °C
-Degree of protection acc. to DIN EN 60 529 for coupled connector	IP65

Current carrying capacity

The current carrying is limited by maximum temperature of materials for inserts and contacts including terminals

Control and test procedures according to DIN EN 60512-5



- ① Wire gauge: 1.5 mm²
- ② Wire gauge: 2.5 mm²

HQ-008/0 Compact inserts

500V 16A 8+⊕

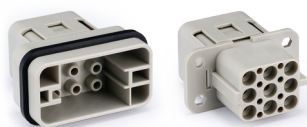


Inserts

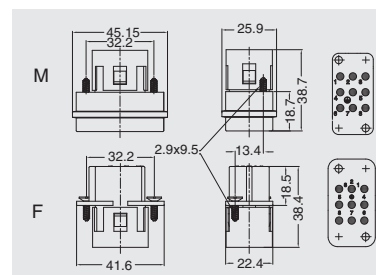
Hoods/Housings: size HC, detail please find the page16-87~16-94.

Crimp terminal

order crimp contacts separately



Insert	Designation	Order No.
Male	HQ-008/0-MC	03700820100
Female	HQ-008/0-FC	03700820200



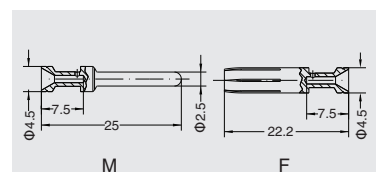
Accessories

Crimp contacts 16A

contact resistance ≤ 1mΩ
silver plated



Male	Order No.	Female	Order No.
CESM-0.37	08121131000	CESF-0.37	08121132000
CESM-0.5	08121133000	CESF-0.5	08121134000
CESM-0.75	08121135000	CESF-0.75	08121136000
CESM-1.0	08121137000	CESF-1.0	08121138000
CESM-1.5	08121139000	CESF-1.5	08121140000
CESM-2.5	08121141000	CESF-2.5	08121142000
CESM-3.0	08121143000	CESF-3.0	08121144000
CESM-4.0	08121145000	CESF-4.0	08121146000



Identification	Wire gauge	Stripping length	
no groove	0.14-0.37 mm ²	AWG 26-22	7.5mm
no groove	0.5 mm ²	AWG 20	7.5mm
1 groove	0.75 mm ²	AWG 18	7.5mm
1 groove	1 mm ²	AWG 18	7.5mm
2 groove	1.5 mm ²	AWG 16	7.5mm
3 groove	2.5 mm ²	AWG 14	7.5mm
wide groove	3 mm ²	AWG 12	7.5mm
no groove	4 mm ²	AWG 12	7.5mm

gold plated



Male	Order No.	Female	Order No.
CEGM-0.37	08121131010	CEGF-0.37	08121132010
CEGM-0.5	08121133010	CEGF-0.5	08121134010
CEGM-0.75	08121135010	CEGF-0.75	08121136010
CEGM-1.0	08121137010	CEGF-1.0	08121138010
CEGM-1.5	08121139010	CEGF-1.5	08121140010
CEGM-2.5	08121141010	CEGF-2.5	08121142010
CEGM-3.0	08121143010	CEGF-3.5	08121144010
CEGM-4.0	08121145010	CEGF-4.0	08121146010

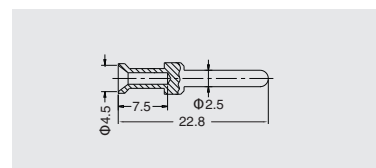
More crimp contacts 16A see P17-03.

Relay contacts

silver plated



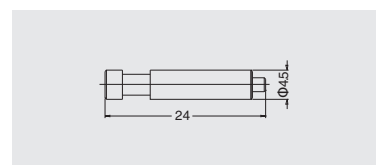
Wire gauge(mm ²)	Designation	Order No.
1	CESM-1.0R	08121137300
1.5	CESM-1.5R	08121139300
2.5	CESM-2.5R	08121141300



Coding element



Description	Designation	Order No.
coding, pokayoke	CODE-E	08131109200



Tools

Crimping tool



Wire gauge	Designation	Order No.
0.5-4mm ²	TL02G	09100021020

Wire gauge: 0.14-0.37mm² please select TL02 Crimping tool.

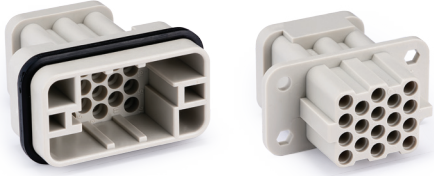
Contact removal tool



Application	Designation	Order No.
for crimp contact 16A	TL01	09100012000

More tools detail please find the page18-13~18-14.

HQ-017 Compact inserts



HQ

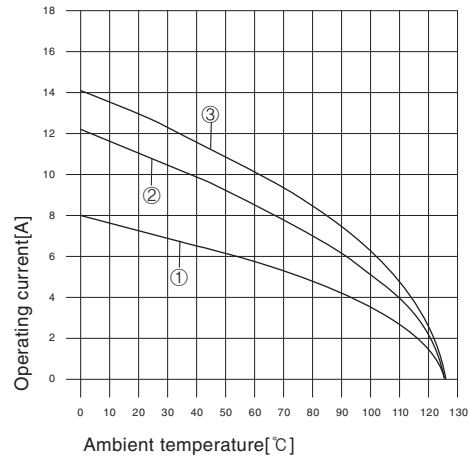
Technical characteristics

Specifications	DIN EN 60 664 DIN EN 61 984
Approvals	
Inserts	
Number of contacts	17+PE
Electrical data acc. to EN 61 984	
-Rated current	10A
-Rated voltage	250V
-Rated impulse voltage	4kV
-Pollution degree	2
Rated voltage acc. to UL/CSA	250V
Insulation resistance	$\geq 10^{10}\Omega$
Material	polycarbonate
Limiting temperatures	-40 °C ... +125 °C
Flammability acc. to UL 94	V0
Mechanical working life(mating cycles)	≥ 500
Contacts	
Material	copper alloy
Surface	hard-silver plated hard-gold plated
Contact resistance	$\leq 3m\Omega$
Crimp terminal	
- mm ²	0.14-2.5mm ²
- AWG	26-14
Hoods/Housings	
Plastic hoods/housings	
Material	thermoplastic
-Locking element	polyamide
-Hoods/Housings seal	NBR
-Limiting temperatures	-40 °C ... +125 °C
-Flammability acc. to UL 94	V0
-Degree of protection acc. to DIN EN 60 529 for coupled connector	IP65
Hoods/Housings, metal	
-Material	metal
-Locking element	stainless steel
-Hoods/Housings seal	NBR
-Limiting temperatures	-40 °C ... +125 °C
-Degree of protection acc. to DIN EN 60 529 for coupled connector	IP65

Current carrying capacity

The current carrying is limited by maximum temperature of materials for inserts and contacts including terminals

Control and test procedures according to DIN EN 60512-5



- ① Wire gauge: 0.5 mm²
- ② Wire gauge: 1.0 mm²
- ③ Wire gauge: 1.5 mm²

HQ-017 Compact inserts

250V 10A 17+ 

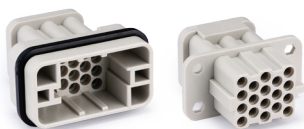


Inserts

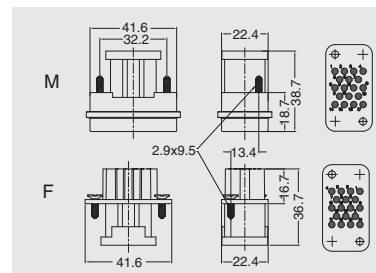
Hoods/Housings: size HC, detail please find the page16-87~16-94.

Crimp terminal

order crimp contacts separately



Insert	Designation	Order No.
Male	HQ-017-MC	03701720100
Female	HQ-017-FC	03701720200



Accessories

Crimp contacts 10A

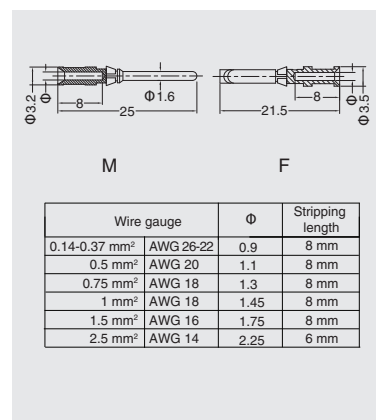
contact resistance $\leq 3m\Omega$
silver plated



gold plated



Male	Order No.	Female	Order No.
CDSM-0.37	08121101000	CDSF-0.37	08121102000
CDSM-0.5	08121103000	CDSF-0.5	08121104000
CDSM-0.75	08121105000	CDSF-0.75	08121106000
CDSM-1.0	08121107000	CDSF-1.0	08121108000
CDSM-1.5	08121109000	CDSF-1.5	08121110000
CDSM-2.5	08121111000	CDSF-2.5	08121112000
CDGM-0.37	08121101010	CDGF-0.37	08121102010
CDGM-0.5	08121103010	CDGF-0.5	08121104010
CDGM-0.75	08121105010	CDGF-0.75	08121106010
CDGM-1.0	08121107010	CDGF-1.0	08121108010
CDGM-1.5	08121109010	CDGF-1.5	08121110010
CDGM-2.5	08121111010	CDGF-2.5	08121112010



More crimp contacts 10A see P17-02.

Tools

Crimping tool



Contact removal tool



Wire gauge	Designation	Order No.
0.14-4mm ²	TL02G	09100021020
Application	Designation	Order No.
for crimp contacts 10A	TL00	09100011000

More tools detail please find the page18-13~18-14.

HQ-004/2 Compact inserts



HQ

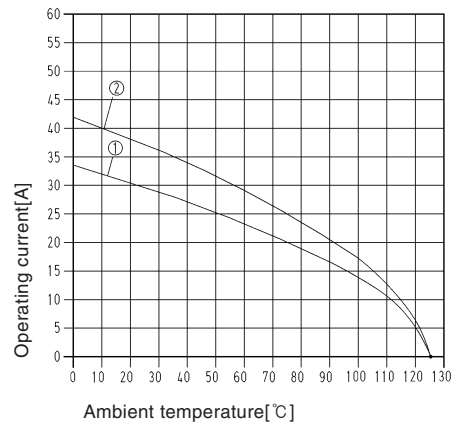
Technical characteristics

Specifications	DIN EN 60 664 DIN EN 61 984
Approvals	
Inserts	
Number of contacts	4/2+PE
Electrical data acc. to EN 61 984	
Power side	
-Rated current	40A
-Rated voltage conductor - ground	400V
-Rated voltage conductor - conductor	690V
-Rated impulse voltage	6kV
-Pollution degree	3
Signal side	
-Rated current	10A
-Rated voltage	250V
-Rated impulse voltage	4kV
-Pollution degree	3
Rated voltage acc. to UL/CSA	600/250V
Insulation resistance	$\geq 10^{10} \Omega$
Material	polycarbonate
Limiting temperatures	-40 °C ... +125 °C
Flammability acc. to UL 94	V0
Mechanical working life(mating cycles)	≥ 500
Contacts	
Material	copper alloy
Surface	hard-silver plated hard-gold plated
Contact resistance	$\leq 0.3m\Omega$
Crimp terminal	
- mm ²	1.5-6mm ² / 0.14-2.5mm ²
- AWG	16-10 / 26-14
Max. insulation diameter	
- Power contacts	5mm
Hoods/Housings	
Plastic hoods/housings	
Material	thermoplastic
-Locking element	polyamide
-Hoods/Housings seal	NBR
-Limiting temperatures	-40 °C ... +125 °C
-Flammability acc. to UL 94	V0
-Degree of protection acc. to DIN EN 60 529 for coupled connector	IP65

Current carrying capacity

The current carrying is limited by maximum temperature of materials for inserts and contacts including terminals

Control and test procedures according to DIN EN 60512-5



Ambient temperature[°C]

① Wire gauge: 2.5 mm²

② Wire gauge: 4 mm²

HQ-004/2 Compact inserts

400/690V 40/10A 4/2+⊕



Inserts

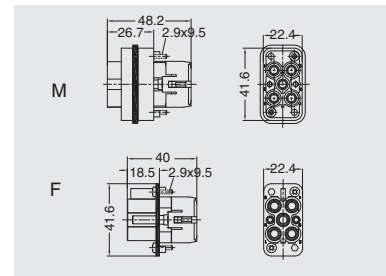
Hoods/Housings: size HC, detail please find the page16-87~16-94.

Crimp terminal

order crimp contacts separately



Insert	Designation	Order No.
Male	HQ-004/2-MC	03700620100
Female	HQ-004/2-FC	03700620200



Accessories

Crimp contacts 10A

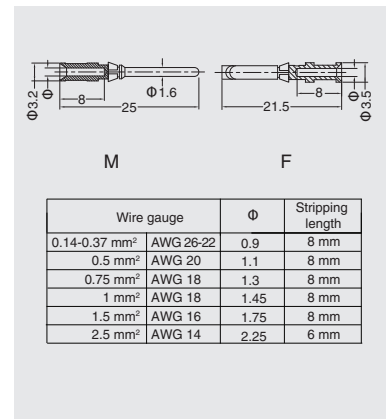
contact resistance $\leq 3m\Omega$
silver plated



gold plated



Male	Order No.	Female	Order No.
CDSM-0.37	08121101000	CDSF-0.37	08121102000
CDSM-0.5	08121103000	CDSF-0.5	08121104000
CDSM-0.75	08121105000	CDSF-0.75	08121106000
CDSM-1.0	08121107000	CDSF-1.0	08121108000
CDSM-1.5	08121109000	CDSF-1.5	08121110000
CDSM-2.5	08121111000	CDSF-2.5	08121112000
CDGM-0.37	08121101010	CDGF-0.37	08121102010
CDGM-0.5	08121103010	CDGF-0.5	08121104010
CDGM-0.75	08121105010	CDGF-0.75	08121106010
CDGM-1.0	08121107010	CDGF-1.0	08121108010
CDGM-1.5	08121109010	CDGF-1.5	08121110010
CDGM-2.5	08121111010	CDGF-2.5	08121112010



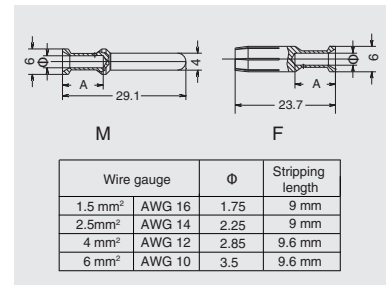
More crimp contacts 10A see P17-02.

Crimp contacts 40A

contact resistance $\leq 0.3m\Omega$
silver plated



Male	Order No.	Female	Order No.
CCSM-1.5	08121151000	CCSF-1.5	08121161000
CCSM-2.5	08121152000	CCSF-2.5	08121162000
CCSM-4.0	08121153000	CCSF-4.0	08121163000
CCSM-6.0	08121154000	CCSF-6.0	08121164000



Tools

Crimping tool



Contact removal tool



Wire gauge	Designation	Order No.
0.14-4mm ²	TL02G	09100021020
1.5-6mm ²	TL02-0G	09100021120

Application	Designation	Order No.
for crimp contacts 10A	TL00	09100011000

Application	Designation	Order No.
for crimp contacts 40A	TL06	09100013000

More tools detail please find the page18-13~18-14.