

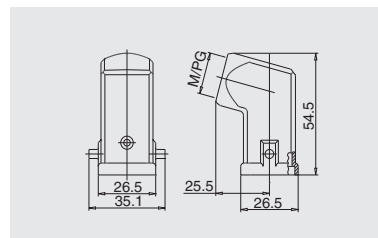
3A Plastic hoods/housings

Degree of protection: IP65

Hoods, side entry



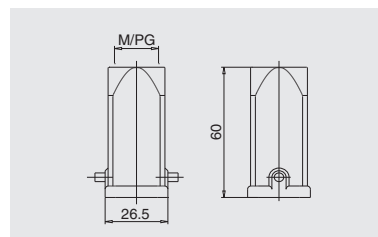
Thread	Designation	Order No.
M20	H3A.P-SE-2B-M20	02003141211
PG11	H3A.P-SE-2B-PG11	02003143311



Hoods, top entry



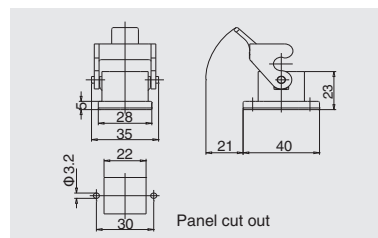
Thread	Designation	Order No.
M20	H3A.P-TE-2B-M20	02003241211
PG11	H3A.P-TE-2B-PG11	02003243311



Housings, bulkhead mounting



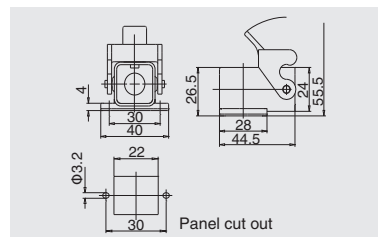
Thread	Designation	Order No.
---	H3A.P-BK-1L	02003010011



Housings, bulkhead mounting



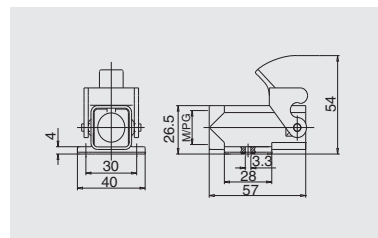
Thread	Designation	Order No.
---	H3A.P-BK-1L-SE	02003910011



Housings, surface mounting



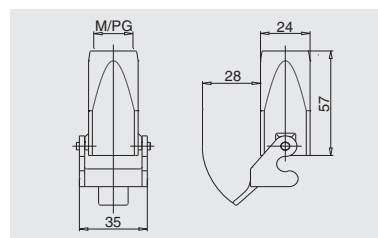
Thread	Designation	Order No.
M20	H3A.P-SF-1L-M20	02003511211
PG11	H3A.P-SF-1L-PG11	02003513311



Housings, cable to cable



Thread	Designation	Order No.
M20	H3A.P-CCT-1L-M20	02003711211
PG11	H3A.P-CCT-1L-PG11	02003713311



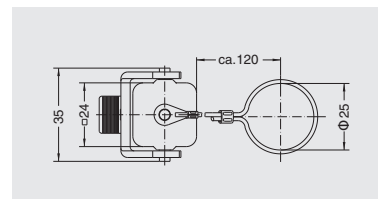
3A Plastic hoods/housings

Degree of protection: IP65

Protection covers



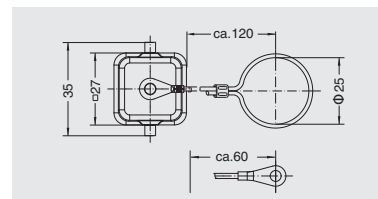
Connect way	Designation	Order No.
	H3A-CV-1L/1M (for male insert)	02021111110
	H3A-CV-1L/1F (for female insert)	02021111120



Protection covers



Connect way	Designation	Order No.
	H3A-CV-2B/1M (for male insert)	02021111310
	H3A-CV-2B/2M (for male insert)	02021111210
	H3A-CV-2B/1F (for female insert)	02021111320
	H3A-CV-2B/2F (for female insert)	02021111220



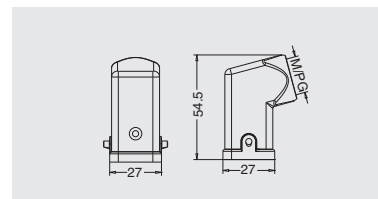
3A Metal hoods/housings

Degree of protection: IP65

Hoods, side entry



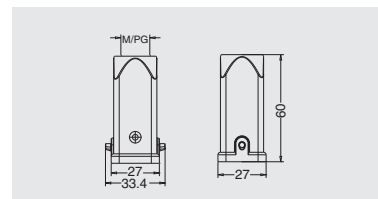
Thread	Designation	Order No.
M20	H3A-SE-2B-M20	02003141212
PG11	H3A-SE-2B-PG11	02003143312



Hoods, top entry



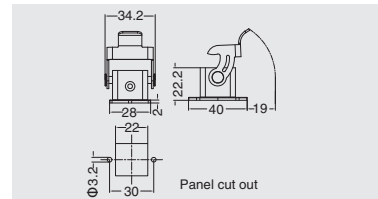
Thread	Designation	Order No.
M20	H3A-TE-2B-M20	02003241212
PG11	H3A-TE-2B-PG11	02003243312



Housings, bulkhead mounting



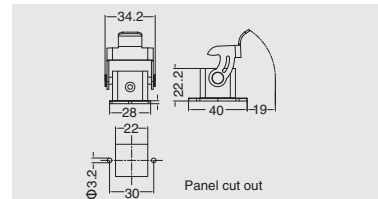
Thread	Designation	Order No.
--	H3A-BK-1LW	02003010012



Housings, bulkhead mounting



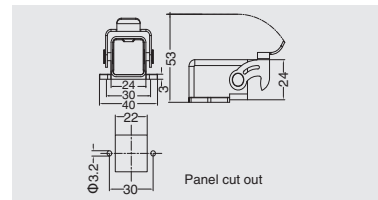
Thread	Designation	Order No.
--	H3A-BK-1LW-MCV/M(for male insert)	02003010062
--	H3A-BK-1LW-MCV/F(for female insert)	02003010063



Housings, bulkhead mounting



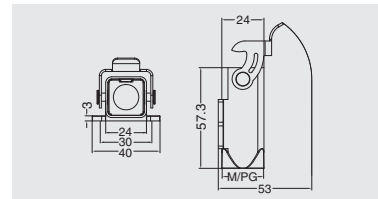
Thread	Designation	Order No.
--	H3A-BK-1LW-MCV/F	02003910012



Housings, surface mounting



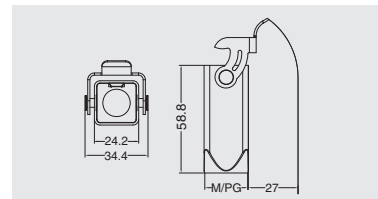
Thread	Designation	Order No.
M20	H3A-SF-1LW-M20	02003931210
PG11	H3A-SF-1LW-PG11	02003513310



Housings, cable to cable



Thread	Designation	Order No.
M20	H3A-CCT-1LW-M20	02003711212
PG11	H3A-CCT-1LW-PG11	02003713312



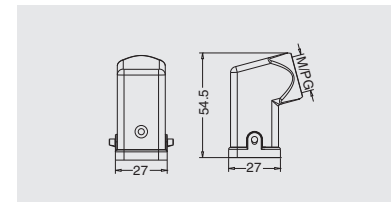
3A Metal hoods/housings(EMC)

Degree of protection: IP65

Hoods, side entry



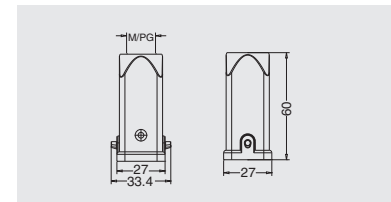
Thread	Designation	Order No.
M20	EMC.H3A-SE-2B-M20	02003141215
PG11	EMC.H3A-SE-2B-PG11	02003143315



Hoods, top entry



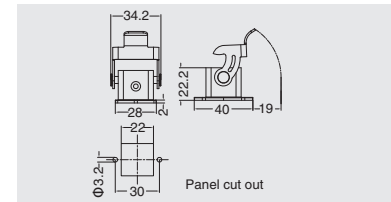
Thread	Designation	Order No.
M20	EMC.H3A-TE-2B-M20	02003241215
PG11	EMC.H3A-TE-2B-PG11	02003243315



Housings, bulkhead mounting



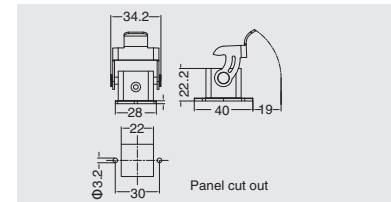
Thread	Designation	Order No.
---	EMC.H3A-BK-1L/W	02003010015



Housings, bulkhead mounting



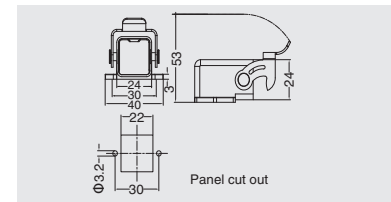
Thread	Designation	Order No.
---	EMC.H3A-BK-1L/W-MCV/M (for male insert)	02003010066
---	EMC.H3A-BK-1L/W-MCV/F (for female insert)	02003010067



Housings, bulkhead mounting



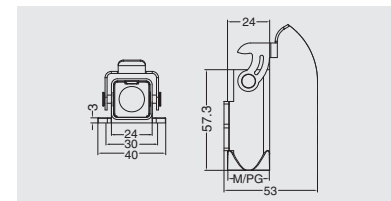
Thread	Designation	Order No.
---	EMC.H3A-BK-1L/W-SE	02003910015



Housings, surface mounting



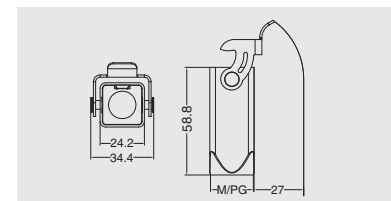
Thread	Designation	Order No.
M20	EMC.H3A-SF-1L/W-M20	02003511215
PG11	EMC.H3A-SF-1L/W-PG11	02003512215



Housings, cable to cable



Thread	Designation	Order No.
M20	EMC.H3A-CCT-1L/W-M20	02003711215
PG11	EMC.H3A-CCT-1L/W-PG11	02003713315



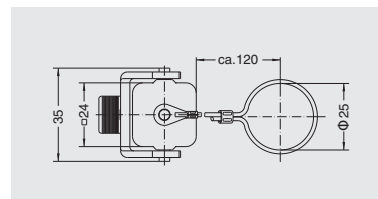
3A Metal hoods/housings

Degree of protection: IP65

Protection covers



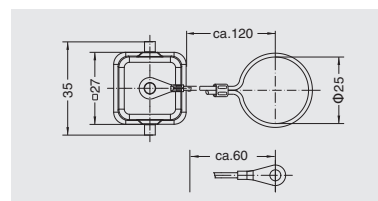
Connect way	Designation	Order No.
	H3A-MCV-1L/1M (for male insert)	02003390110
	H3A-MCV-1L/1F (for female insert)	02003390120



Protection covers



Connect way	Designation	Order No.
	H3A-MCV-2B/1M (for male insert)	02003390310
	H3A-MCV-2B/2M (for male insert)	02003390210
	H3A-MCV-2B/1F (or female insert)	02003390320
	H3A-MCV-2B/2F (or female insert)	02003390220



3A Pressure tight hoods/housings

Epoxy power paint/Chromated

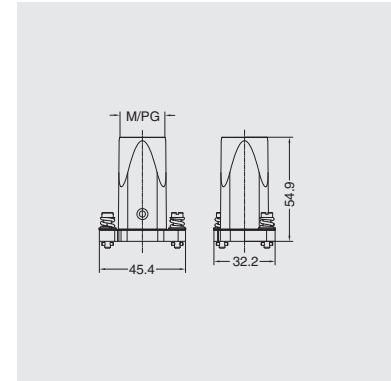
Degree of protection: IP68

H version

Hoods, top entry



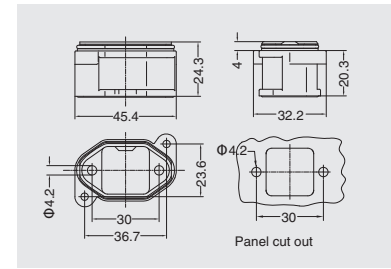
Thread	Designation	Order No.
	Epoxy power paint-Screw locking	
M20	HP3A/H-TE-2S-M20	04103851222
PG13.5	HP3A/H-TE-2S-PG13.5	04103853422
	Epoxy power paint-Toggle locking	
M20	HP3A/H-TE-2T-M20	04103451222
PG13.5	HP3A/H-TE-2T-PG13.5	04103453422
	Chromated-Screw locking	
M20	C.HP3A/H-TE-2S-M20	04103851212
PG13.5	C.HP3A/H-TE-2S-PG13.5	04103853412
	Chromated-Toggle locking	
M20	C.HP3A/H-TE-2T-M20	04103451212
PG13.5	C.HP3A/H-TE-2T-PG13.5	04103453412



Housings*, bulkhead mounting



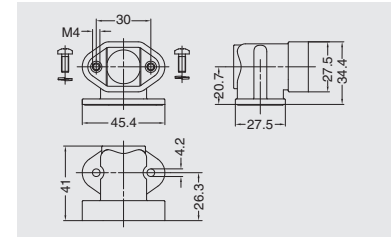
Thread	Designation	Order No.
	Epoxy power paint-Screw locking	
--	HP3A/H-BK-2H	04103020022
	Epoxy power paint-Toggle locking	
--	HP3A/H-BK-2T	04103010022
	Chromated-Screw locking	
--	C.HP3A/H-BK-2H	04103020012
	Chromated-Toggle locking	
--	C.HP3A/H-BK-2T	04103010012



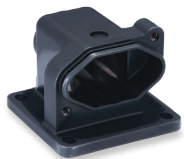
Adaptor for Housings*



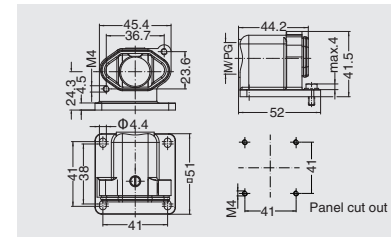
Thread	Designation	Order No.
	Epoxy power paint	
--	HP3A/H-BK-SE	04103090022
	Chromated	
--	C.HP3A/H-BK-SE	04103090012



Housings, surface mounting



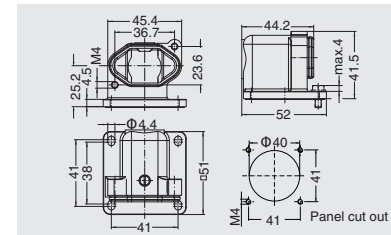
Thread	Designation	Order No.
	Epoxy power paint-Screw locking	
M20	HP3A/H-SF-2H-M20	04103310022
PG13.5	HP3A/H-SF-2H-PG13.5	04103313422
	Chromated-Screw locking	
M20	C.HP3A/H-SF-2H-M20	04103310012
PG13.5	C.HP3A/H-SF-2H-PG13.5	04103313412



Housings, bulkhead mounting



Thread	Designation	Order No.
	Epoxy power paint-Screw locking	
--	HP3A/H-SF-2H	04103510011
	Chromated-Screw locking	
--	C.HP3A/H-SF-2H	04103510012



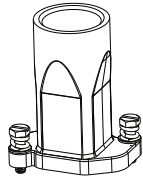
3A Pressure tight hoods/housings

Epoxy power paint/Chromated

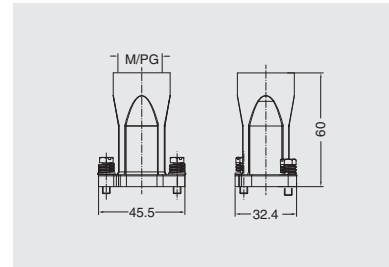
Degree of protection: IP68

H version

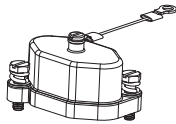
Hoods, top entry, high construction



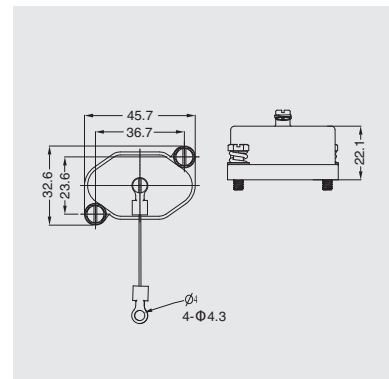
Thread	Designation	Order No.
	Epoxy power paint-Screw locking	
M25	HP3A/H-TEH-2S-M25	04103861322
	Epoxy power paint-Toggle locking	
M25	HP3A/H-TEH-2T-M25	04103461322
	Chromated-Screw locking	
M25	C.HP3A/H-TEH-2S-M25	04103861312
	Chromated-Toggle locking	
M25	C.HP3A/H-TEH-2T-M25	04103461312



Protection covers



Thread	Designation	Order No.
	Epoxy power paint-Screw locking	
---	HP3A/H-MCV-2S	04103952122
	HP3A/H-MCV-2S/2S	04103952112
	Epoxy power paint-Toggle locking	
---	HP3A/H-MCV-2T	04103951122
	HP3A/H-MCV-2T/2S	04103951112
	Chromated-Screw locking	
---	C.HP3A/H-MCV-2S	04103952022
	C.HP3A/H-MCV-2S/2S	04103952012
	Chromated-Toggle locking	
---	C.HP3A/H-MCV-2T	04103951022
	C.HP3A/H-MCV-2T/2S	04103951012



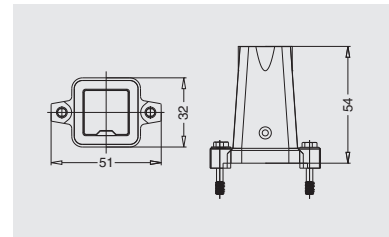
Degree of protection: IP68

W version

Hoods, top entry



Thread	Designation	Order No.
M20	HP3A-TE-2S-M20	04003451202
PG11	HP3A-TE-2S-PG11	04003253300



Housings, bulkhead mounting



Thread	Designation	Order No.
---	HP3A-BK-2H	04003010010

